



ELECTRONIC COPY

LABORATORY GROWN DIAMOND REPORT

September 16, 2024
IGI Report Number LG652462313
Description LABORATORY GROWN DIAMOND
Shape and Cutting Style PRINCESS CUT
Measurements 6.37 X 6.21 X 4.17 MM

GRADING RESULTS

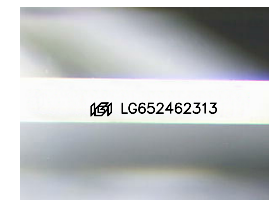
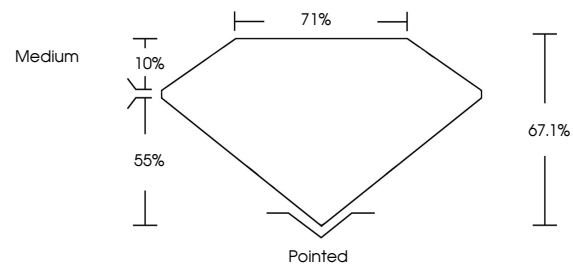
Carat Weight 1.42 CARAT
Color Grade D
Clarity Grade VS 2

ADDITIONAL GRADING INFORMATION

Polish EXCELLENT
Symmetry EXCELLENT
Fluorescence NONE
Inscription(s) IGI LG652462313

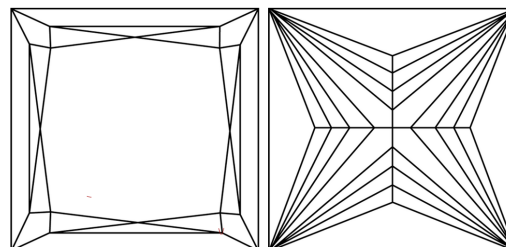
Comments: This Laboratory Grown Diamond was created by Chemical Vapor Deposition (CVD) growth process. Type IIa

PROPORTIONS



Sample Image Used

CLARITY CHARACTERISTICS



KEY TO SYMBOLS

Red symbols indicate internal characteristics.
Green symbols indicate external characteristics.

COLOR

D E F G H I J Faint Very Light Light

CLARITY

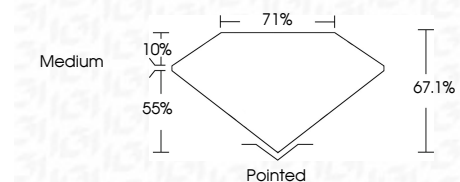
IF VS 1-2 VS 1-2 SI 1-2 I 1-3
Internally Flawless Very Very Slightly Included Very Slightly Included Slightly Included Included



September 16, 2024
IGI Report Number LG652462313
Description LABORATORY GROWN DIAMOND
Shape and Cutting Style PRINCESS CUT
Measurements 6.37 X 6.21 X 4.17 MM

GRADING RESULTS

Carat Weight 1.42 CARAT
Color Grade D
Clarity Grade VS 2



ADDITIONAL GRADING INFORMATION

Polish EXCELLENT
Symmetry EXCELLENT
Fluorescence NONE
Inscription(s) IGI LG652462313
Comments: This Laboratory Grown Diamond was created by Chemical Vapor Deposition (CVD) growth process. Type IIa



IGI



September 16, 2024
IGI Report No LG652462313
PRINCESS CUT
6.37 X 6.21 X 4.17 MM
1.42 CARAT
D
VS 2
6.37%
71%
Medium
Pointed
EXCELLENT
EXCELLENT
NONE
IGI LG652462313
Comments: This Laboratory Grown Diamond was created by Chemical Vapor Deposition (CVD) growth process. Type IIa