



ELECTRONIC COPY

LG652491245
Report verification at igi.org



September 19, 2024

IGI Report Number **LG652491245**

Description **LABORATORY GROWN DIAMOND**

Shape and Cutting Style **CUT CORNERED
RECTANGULAR MODIFIED
BRILLIANT**

Measurements **8.12 X 5.61 X 3.84 MM**

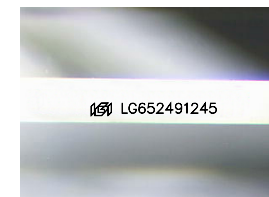
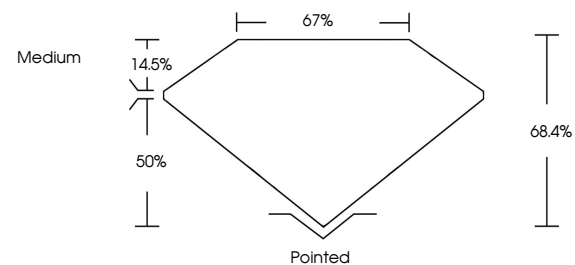
GRADING RESULTS

Carat Weight **1.54 CARAT**

Color Grade **E**

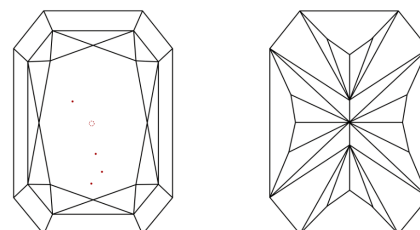
Clarity Grade **VVS 2**

PROPORTIONS



Sample Image Used

CLARITY CHARACTERISTICS



KEY TO SYMBOLS

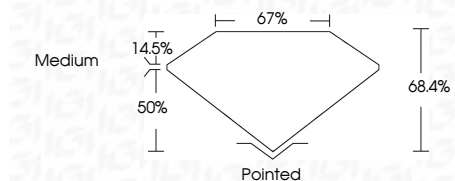
Red symbols indicate internal characteristics.
Green symbols indicate external characteristics.

COLOR

D E F G H I J Faint Very Light Light

CLARITY

IF	VS ¹⁻²	VS ¹⁻²	SI ¹⁻²	I ¹⁻³
Internally Flawless	Very Very Slightly Included	Very Slightly Included	Slightly Included	Included



ADDITIONAL GRADING INFORMATION

Polish **EXCELLENT**

Symmetry **EXCELLENT**

Fluorescence **NONE**

Inscription(s) **IGI LG652491245**

Comments: This Laboratory Grown Diamond was created by Chemical Vapor Deposition (CVD) growth process. Type IIa



IGI



September 19, 2024
IGI Report No. LG652491245
CUT CORNERED RECT. MODIFIED BRILLIANT
8.12 X 5.61 X 3.84 MM
1.54 CARAT
E
VVS 2
68.4%
67%
Medium
Pointed
EXCELLENT
EXCELLENT
NONE
NONE
IGI LG652491245
Comments: This Laboratory Grown Diamond was created by Chemical Vapor Deposition (CVD) growth process. Type IIa