



ELECTRONIC COPY

LABORATORY GROWN DIAMOND REPORT

October 7, 2024	
IGI Report Number	LG653413457
Description	LABORATORY GROWN DIAMOND
Shape and Cutting Style	ROUND BRILLIANT
Measurements	7.79 - 7.84 X 4.81 MM

GRADING RESULTS

Carat Weight	1.81 CARAT
Color Grade	F
Clarity Grade	VVS 2
Cut Grade	IDEAL

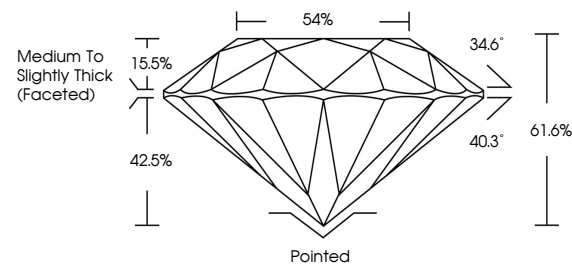
ADDITIONAL GRADING INFORMATION

Polish	EXCELLENT
Symmetry	EXCELLENT
Fluorescence	NONE
Inscription(s)	 LG653413457

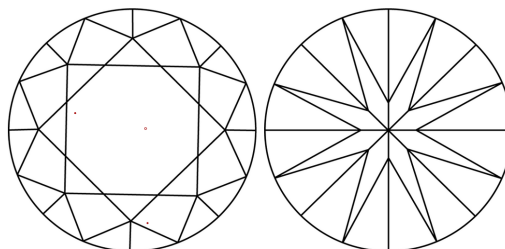
Comments: This Laboratory Grown Diamond was created by Chemical Vapor Deposition (CVD) growth process.
Type IIa

LG653413457
Report verification at igi.org

PROPORTIONS

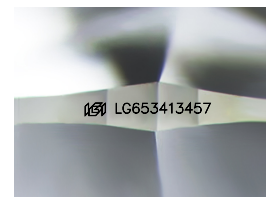


CLARITY CHARACTERISTICS



KEY TO SYMBOLS

Red symbols indicate internal characteristics.
Green symbols indicate external characteristics.



Sample Image Used

COLOR

D E F G H I J Faint Very Light Light

CLARITY

IF	VVS ¹⁻²	VS ¹⁻²	SI ¹⁻²	I ¹⁻³
Internally Flawless	Very Very Slightly Included	Very Slightly Included	Slightly Included	Included



© IGI 2020, International Gemological Institute

FD - 10 20

www.igi.org

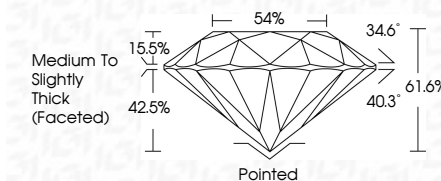
LABORATORY GROWN DIAMOND REPORT



October 7, 2024	
IGI Report Number	LG653413457
Description	LABORATORY GROWN DIAMOND
Shape and Cutting Style	ROUND BRILLIANT
Measurements	7.79 - 7.84 X 4.81 MM

GRADING RESULTS

Carat Weight	1.81 CARAT
Color Grade	F
Clarity Grade	VVS 2
Cut Grade	IDEAL



ADDITIONAL GRADING INFORMATION

Polish	EXCELLENT
Symmetry	EXCELLENT
Fluorescence	NONE
Inscription(s)	158 LG653413457
<p>Comments: This Laboratory Grown Diamond was created by Chemical Vapor Deposition (CVD) growth process.</p> <p>Type IIa</p>	



Date:	October 7, 2024
Report No.:	LG683413457
Gross Weight:	0.91 CARAT
Net Weight:	0.81 CARAT
Color Grade:	VVS 2
Cut Grade:	IDEAL
Depth:	61.6%
Table:	54%
Grain:	Medium to Slightly Thick Faceted
Clarity:	Pointed
Patch:	EXCELLENT
Symmetry:	EXCELLENT
Fluorescence:	NONE
Inclusions:	#69 LG683413457
Comments:	This Laboratory Grown Diamond was created by Chemical Vapor Deposition (CVD) growth process. Type IIa