



ELECTRONIC COPY

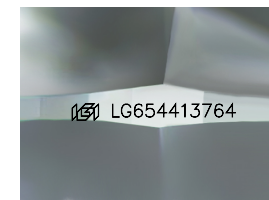
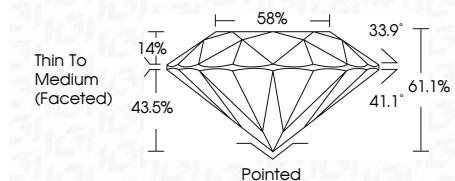
LG654413764 Report verification at igi.org



October 23, 2024 IGI Report Number LG654413764 Description LABORATORY GROWN DIAMOND Shape and Cutting Style ROUND BRILLIANT Measurements 8.01 - 8.06 X 4.91 MM

GRADING RESULTS

Carat Weight 1.93 CARAT Color Grade E Clarity Grade VVS 2 Cut Grade IDEAL



Sample Image Used

ADDITIONAL GRADING INFORMATION

Polish EXCELLENT Symmetry EXCELLENT Fluorescence NONE Inscription(s) IGI LG654413764 Comments: This Laboratory Grown Diamond was created by Chemical Vapor Deposition (CVD) growth process. Type IIa



October 23, 2024 IGI Report No LG654413764 ROUND BRILLIANT 8.01 - 8.06 X 4.91 MM 1.93 CARAT E VVS 2 IDEAL 61.1% 58% Thin To Medium (Faceted) Pointed EXCELLENT EXCELLENT NONE IGI LG654413764 Comments: This Laboratory Grown Diamond was created by Chemical Vapor Deposition (CVD) growth process. Type IIa

October 23, 2024 IGI Report Number LG654413764 Description LABORATORY GROWN DIAMOND Shape and Cutting Style ROUND BRILLIANT Measurements 8.01 - 8.06 X 4.91 MM

GRADING RESULTS

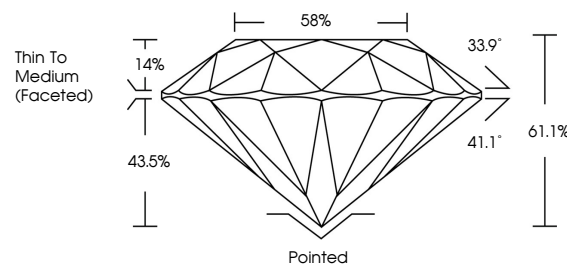
Carat Weight 1.93 CARAT Color Grade E Clarity Grade VVS 2 Cut Grade IDEAL

ADDITIONAL GRADING INFORMATION

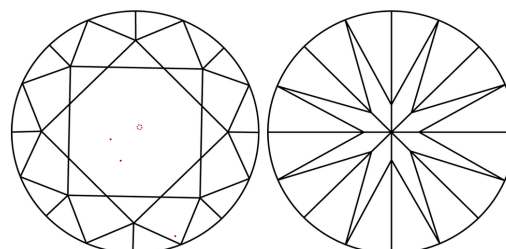
Polish EXCELLENT Symmetry EXCELLENT Fluorescence NONE Inscription(s) IGI LG654413764

Comments: This Laboratory Grown Diamond was created by Chemical Vapor Deposition (CVD) growth process. Type IIa

PROPORTIONS



CLARITY CHARACTERISTICS



KEY TO SYMBOLS

Red symbols indicate internal characteristics. Green symbols indicate external characteristics.

COLOR

D E F G H I J Faint Very Light Light

CLARITY

IF WS 1-2 VS 1-2 SI 1-2 I 1-3 Internally Flawless Very Very Slightly Included Very Slightly Included Slightly Included Included

