



ELECTRONIC COPY

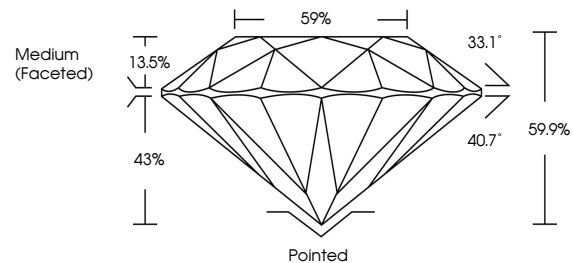
LG655422214
Report verification at igi.org



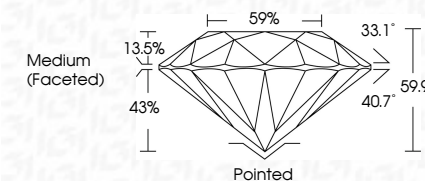
September 29, 2024
IGI Report Number **LG655422214**
Description **LABORATORY GROWN DIAMOND**
Shape and Cutting Style **ROUND BRILLIANT**
Measurements **8.50 - 8.52 X 5.10 MM**
GRADING RESULTS
Carat Weight **2.27 CARATS**
Color Grade **D**
Clarity Grade **VS 2**
Cut Grade **IDEAL**

September 29, 2024
IGI Report Number **LG655422214**
Description **LABORATORY GROWN DIAMOND**
Shape and Cutting Style **ROUND BRILLIANT**
Measurements **8.50 - 8.52 X 5.10 MM**
GRADING RESULTS
Carat Weight **2.27 CARATS**
Color Grade **D**
Clarity Grade **VS 2**
Cut Grade **IDEAL**

PROPORTIONS



Sample Image Used



ADDITIONAL GRADING INFORMATION

Polish **EXCELLENT**
Symmetry **EXCELLENT**
Fluorescence **NONE**
Inscription(s) **IGI LG655422214**

Comments: This Laboratory Grown Diamond was created by Chemical Vapor Deposition (CVD) growth process.
Type IIa

ADDITIONAL GRADING INFORMATION

Polish **EXCELLENT**
Symmetry **EXCELLENT**
Fluorescence **NONE**
Inscription(s) **IGI LG655422214**
Comments: This Laboratory Grown Diamond was created by Chemical Vapor Deposition (CVD) growth process.
Type IIa

COLOR

D E F G H I J Faint Very Light Light

CLARITY

| | | | | |
|---------------------|-----------------------------|------------------------|-------------------|------------------|
| IF | VS ¹⁻² | VS ¹⁻² | SI ¹⁻² | I ¹⁻³ |
| Internally Flawless | Very Very Slightly Included | Very Slightly Included | Slightly Included | Included |



IGI

September 29, 2024
IGI Report No LG655422214
ROUND BRILLIANT
8.50 - 8.52 X 5.10 MM
2.27 CARATS
Color Grade **D**
Clarity Grade **VS 2**
Depth **59.9%**
Table **59%**
Girdle **Medium (Faceted)**
Culet **Pointed**
Polish **EXCELLENT**
Symmetry **EXCELLENT**
Fluorescence **NONE**
Inscriptions(s) **IGI LG655422214**
Comments: This Laboratory Grown Diamond was created by Chemical Vapor Deposition (CVD) growth process.
Type IIa