



ELECTRONIC COPY

LABORATORY GROWN DIAMOND REPORT

October 9, 2024	
IGI Report Number	LG658472395
Description	LABORATORY GROWN DIAMOND
Shape and Cutting Style	CUT CORNERED RECTANGULAR MODIFIED BRILLIANT
Measurements	9.44 X 6.50 X 4.45 MM

GRADING RESULTS

Carat Weight	2.43 CARATS
Color Grade	E
Clarity Grade	VS 1

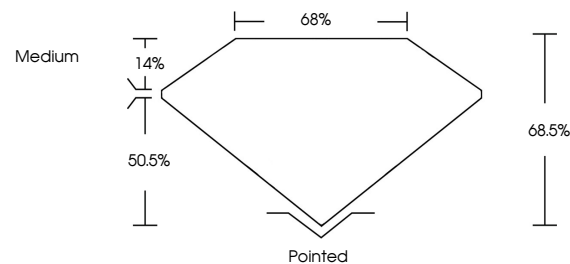
ADDITIONAL GRADING INFORMATION

Polish	EXCELLENT
Symmetry	EXCELLENT
Fluorescence	NONE
Inscription(s)	 LG658472395

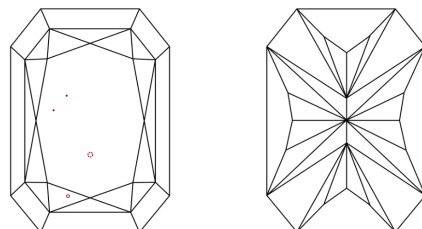
Comments: This Laboratory Grown Diamond was created by Chemical Vapor Deposition (CVD) growth process.
Type IIa

LG658472395
Report verification at igi.org

PROPORTIONS

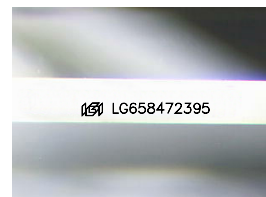


CLARITY CHARACTERISTICS



KEY TO SYMBOLS

Red symbols indicate internal characteristics.
Green symbols indicate external characteristics.



Sample Image Used

COLOR

D E F G H I J Faint Very Light Light

CLARITY

IF	VVS ¹⁻²	VS ¹⁻²	SI ¹⁻²	I ¹⁻³
Internally Flawless	Very Very Slightly Included	Very Slightly Included	Slightly Included	Included



© IGI 2020, International Gemological Institute

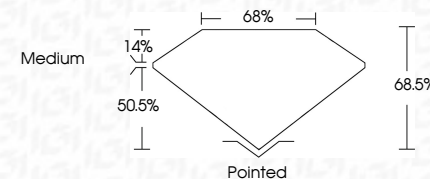
FD - 10 20

www.igi.org

LABORATORY GROWN DIAMOND REPORT



October 9, 2024	
IGI Report Number	LG658472395
Description	LABORATORY GROWN DIAMOND
Shape and Cutting Style	CUT CORNERED RECTANGULAR MODIFIED BRILLIANT
Measurements	9.44 X 6.50 X 4.45 MM
GRADING RESULTS	
Carat Weight	2.43 CARATS
Color Grade	E
Clarity Grade	VS 1



ADDITIONAL GRADING INFORMATION

Polish	EXCELLENT
Symmetry	EXCELLENT
Fluorescence	NONE
Inscription(s)	 LG6658472395
Comments: This Laboratory Grown Diamond was created by Chemical Vapor Deposition (CVD) growth process.	
Type IIa	



IG

October 9, 2024	Report No LG58472395	2.43 CARATS	E
CU CORNERED RECT, MODIFIED BRILLIANT			
2.44 X 6.50 X 4.45 MM			
Carat Weight	VS 1		
Color Grade	68.6%		
	65%		
	Medium		
Clarity Grade	Polished		
Depth	EXCELLENT		
Table	EXCELLENT		
Grade	Symmetry		
	Fluorescence		
	None		
	sent LG58472395		

Comments:
This Laboratory Grown Diamond was
created by Chemical Vapor Deposition
(CVD) growth process.