



**INTERNATIONAL
GEMOLOGICAL
INSTITUTE**

ELECTRONIC COPY

LABORATORY GROWN DIAMOND REPORT

October 10, 2024	
IGI Report Number	LG658476969
Description	LABORATORY GROWN DIAMOND
Shape and Cutting Style	CUT CORNERED RECTANGULAR MODIFIED BRILLIANT
Measurements	7.59 X 5.61 X 3.79 MM

GRADING RESULTS

Carat Weight	1.39 CARAT
Color Grade	D
Clarity Grade	VS 1

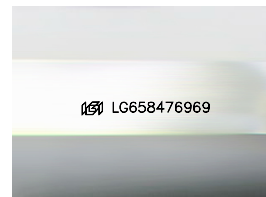
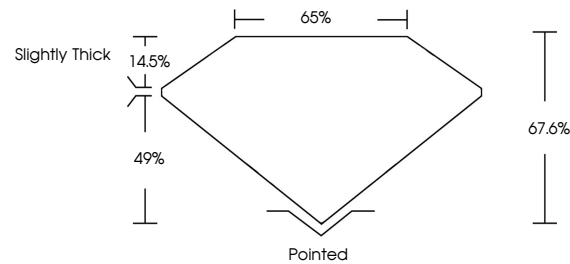
ADDITIONAL GRADING INFORMATION

Polish	EXCELLENT
Symmetry	EXCELLENT
Fluorescence	NONE
Inscription(s)	 LG658476969

Comments: This Laboratory Grown Diamond was created by Chemical Vapor Deposition (CVD) growth process.
Type IIa

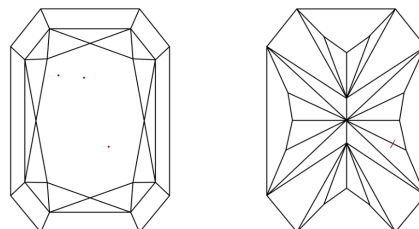
LG658476969
Report verification at [igi.org](https://www.igi.org)

PROPORTIONS



Sample Image Used

CLARITY CHARACTERISTICS



KEY TO SYMBOLS

Red symbols indicate internal characteristics.
Green symbols indicate external characteristics.

COLOR

D E F G H I J Faint Very Light Light

CLARITY

IF	WVS ¹⁻²	VS ¹⁻²	SI ¹⁻²	I ¹⁻³
Internally Flawless	Very Very Slightly Included	Very Slightly Included	Slightly Included	Included



© IGI 2020, International Gemological Institute

FD - 10 20

www.igi.org

LABORATORY GROWN DIAMOND REPORT

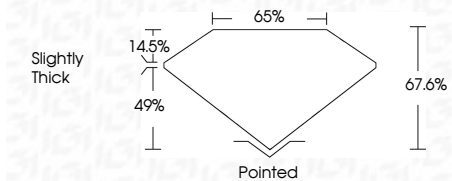


October 10, 2024	
IGI Report Number	LG658476969
Description	LABORATORY GROWN DIAMOND
Shape and Cutting Style	CUT CORNERED RECTANGULAR MODIFIED BRILLIANT


Measurements **7.59 X 5.61 X 3.79 MM**

GRADING RESULTS

Carat Weight	1.39 CARAT
Color Grade	D
Clarity Grade	VS 1



ADDITIONAL GRADING INFORMATION

Polish	EXCELLENT
Symmetry	EXCELLENT
Fluorescence	NONE
Inscription(s)	 LG658476969
<p>Comments: This Laboratory Grown Diamond was created by Chemical Vapor Deposition (CVD) growth process.</p> <p>Type IIa</p>	



October 10, 2024	
IGI REPORT NO LG65847/9699	
CUT CORNERED RECT. MODIFIED BRILLIANT	
1.59 X 6.61 X 3.79 MM	1.59 CARAT
Carat Weight	D
Color Grade	Vs 1
Clarity Grade	67.6%
Depth	66%
Table	Slightly Thick
Girdle	
Culet	Poished
Facet	EXCELLENT
Symmetry	EXCELLENT
Fluorescence	NONE
Inclusions(s)	#81 LG65847/9699
Comments:	
	This Laboratory Grown Diamond was created by Chemical Vapor Deposition (CVD) growth process.
Type IIA	

THIS DOCUMENT WAS PRODUCED WITH THE FOLLOWING SECURITY MEASURES: SPECIAL DOCUMENT PAPER, INK SCREENS, WATERMARK, BACKGROUND DESIGNS, HOLOGRAM AND OTHER SECURITY FEATURES NOT LISTED AND DO EXCEED DOCUMENT SECURITY INDUSTRY GUIDELINES