



ELECTRONIC COPY

LABORATORY GROWN DIAMOND REPORT

October 14, 2024
 IGI Report Number **LG659454041**
 Description **LABORATORY GROWN DIAMOND**
 Shape and Cutting Style **ROUND BRILLIANT**
 Measurements **9.03 - 9.12 X 5.47 MM**

GRADING RESULTS

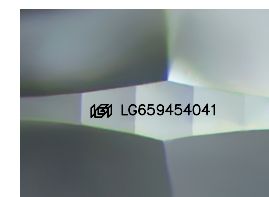
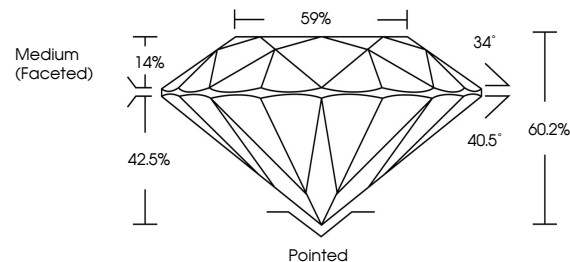
Carat Weight **2.78 CARATS**
 Color Grade **E**
 Clarity Grade **VS 1**
 Cut Grade **IDEAL**

ADDITIONAL GRADING INFORMATION

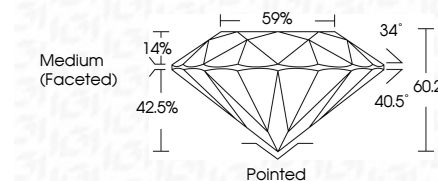
Polish **EXCELLENT**
 Symmetry **EXCELLENT**
 Fluorescence **NONE**
 Inscription(s) **IGI LG659454041**

Comments: This Laboratory Grown Diamond was created by Chemical Vapor Deposition (CVD) growth process.
 Type IIa

PROPORTIONS



Sample Image Used



COLOR

D E F G H I J Faint Very Light Light

CLARITY

IF	VS ¹⁻²	VS ¹⁻²	SI ¹⁻²	I ¹⁻³
Internally Flawless	Very Very Slightly Included	Very Slightly Included	Slightly Included	Included

ADDITIONAL GRADING INFORMATION

Polish **EXCELLENT**
 Symmetry **EXCELLENT**
 Fluorescence **NONE**
 Inscription(s) **IGI LG659454041**
 Comments: This Laboratory Grown Diamond was created by Chemical Vapor Deposition (CVD) growth process.
 Type IIa



October 14, 2024
 IGI Report No **LG659454041**
ROUND BRILLIANT

9.03 - 9.12 X 5.47 MM

2.78 CARATS

E

VS 1

IDEAL

60.2%

59%

Medium (Faceted)

Pointed

EXCELLENT

EXCELLENT

NONE

IGI LG659454041

Comments: This Laboratory Grown Diamond was created by Chemical Vapor Deposition (CVD) growth process.
 Type IIa