



ELECTRONIC COPY

LABORATORY GROWN DIAMOND REPORT

October 14, 2024
 IGI Report Number **LG659454271**
 Description **LABORATORY GROWN DIAMOND**
 Shape and Cutting Style **ROUND BRILLIANT**
 Measurements **8.05 - 8.11 X 4.88 MM**

GRADING RESULTS

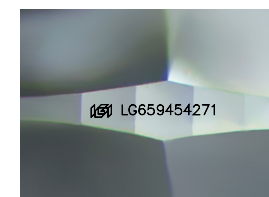
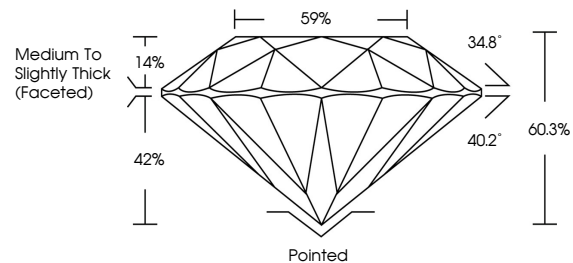
Carat Weight **2.00 CARATS**
 Color Grade **E**
 Clarity Grade **VS 1**
 Cut Grade **IDEAL**

ADDITIONAL GRADING INFORMATION

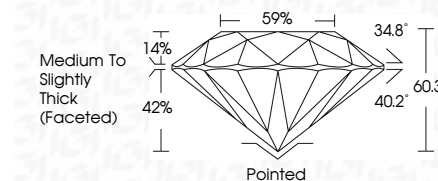
Polish **EXCELLENT**
 Symmetry **EXCELLENT**
 Fluorescence **NONE**
 Inscription(s) **IGI LG659454271**

Comments: This Laboratory Grown Diamond was created by Chemical Vapor Deposition (CVD) growth process.
 Type IIa

PROPORTIONS



Sample Image Used



COLOR

D E F G H I J Faint Very Light Light

CLARITY

IF	VS ¹⁻²	VS ¹⁻²	SI ¹⁻²	I ¹⁻³
Internally Flawless	Very Very Slightly Included	Very Slightly Included	Slightly Included	Included

ADDITIONAL GRADING INFORMATION

Polish **EXCELLENT**
 Symmetry **EXCELLENT**
 Fluorescence **NONE**
 Inscription(s) **IGI LG659454271**
 Comments: This Laboratory Grown Diamond was created by Chemical Vapor Deposition (CVD) growth process.
 Type IIa



October 14, 2024
 IGI Report No **LG659454271**
ROUND BRILLIANT

8.05 - 8.11 X 4.88 MM

2.00 CARATS
E

Carat Weight
 Color Grade
 Clarity Grade
 Cut Grade
 Depth
 Table
 Girdle
 Medium To Slightly Thick (Faceted)

VS 1
IDEAL
60.3%
59%

Culet
 Polish
 Symmetry
 Fluorescence
 Inscription(s)

Pointed
EXCELLENT
EXCELLENT
NONE
IGI LG659454271

Comments: This Laboratory Grown Diamond was created by Chemical Vapor Deposition (CVD) growth process.
 Type IIa