



ELECTRONIC COPY

LG660421929
Report verification at igi.org



October 18, 2024

IGI Report Number LG660421929

Description LABORATORY GROWN DIAMOND

Shape and Cutting Style PRINCESS CUT

Measurements 9.73 X 9.49 X 6.94 MM

GRADING RESULTS

Carat Weight 6.03 CARATS

Color Grade F

Clarity Grade VS 1

October 18, 2024

IGI Report Number LG660421929

Description LABORATORY GROWN DIAMOND

Shape and Cutting Style PRINCESS CUT

Measurements 9.73 X 9.49 X 6.94 MM

GRADING RESULTS

Carat Weight 6.03 CARATS

Color Grade F

Clarity Grade VS 1

ADDITIONAL GRADING INFORMATION

Polish EXCELLENT

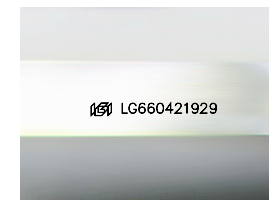
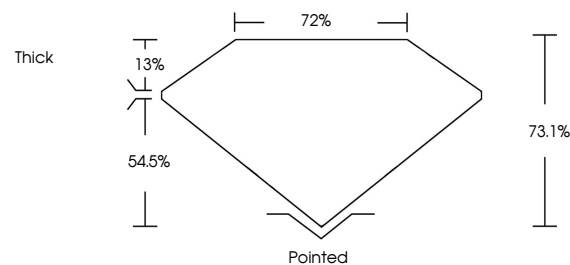
Symmetry EXCELLENT

Fluorescence NONE

Inscription(s) LG660421929

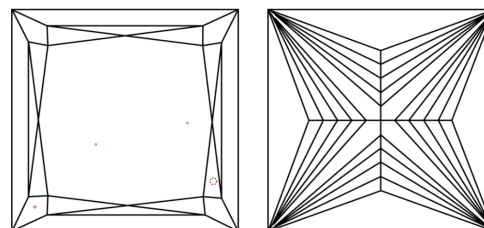
Comments: This Laboratory Grown Diamond was created by Chemical Vapor Deposition (CVD) growth process. Type IIa

PROPORTIONS



Sample Image Used

CLARITY CHARACTERISTICS



KEY TO SYMBOLS

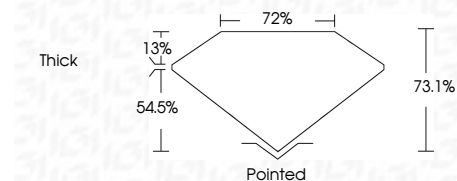
Red symbols indicate internal characteristics. Green symbols indicate external characteristics.

COLOR

D E F G H I J Faint Very Light Light

CLARITY

IF VS 1-2 VS 1-2 SI 1-2 I 1-3 Internally Flawless Very Very Slightly Included Very Slightly Included Slightly Included Included



ADDITIONAL GRADING INFORMATION

Polish EXCELLENT

Symmetry EXCELLENT

Fluorescence NONE

Inscription(s) LG660421929

Comments: This Laboratory Grown Diamond was created by Chemical Vapor Deposition (CVD) growth process. Type IIa



Table with diamond specifications: October 18, 2024, IGI Report No. LG660421929, PRINCESS CUT, 6.03 CARATS, F, 9.73 X 9.49 X 6.94 MM, VS 1, 73.1%, 72%, Thick, Pointed, EXCELLENT, EXCELLENT, NONE, LG660421929

Comments: This Laboratory Grown Diamond was created by Chemical Vapor Deposition (CVD) growth process. Type IIa