



**ELECTRONIC COPY**

## LABORATORY GROWN DIAMOND REPORT

October 19, 2024	
IGI Report Number	LG660475747
Description	LABORATORY GROWN DIAMOND
Shape and Cutting Style	CUT CORNERED RECTANGULAR MODIFIED BRILLIANT
Measurements	9.48 X 6.72 X 4.41 MM

## GRADING RESULTS

Carat Weight	2.41 CARATS
Color Grade	F
Clarity Grade	VS 1

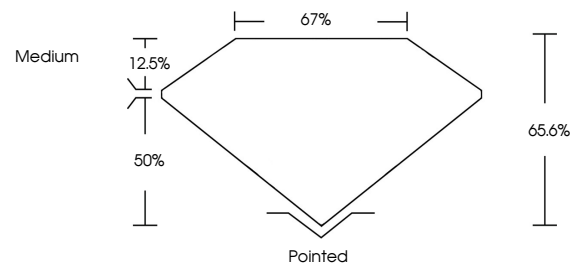
### ADDITIONAL GRADING INFORMATION

Polish	EXCELLENT
Symmetry	EXCELLENT
Fluorescence	NONE
Inscription(s)	151 LG660475747

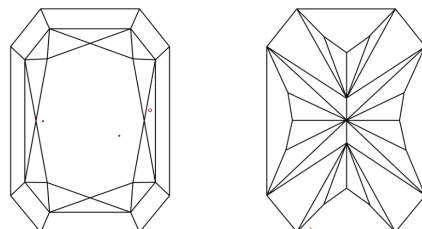
Comments: This Laboratory Grown Diamond was created by Chemical Vapor Deposition (CVD) growth process.  
Type IIa

LG660475747  
Report verification at [lgi.org](https://lgi.org)

## PROPORTIONS

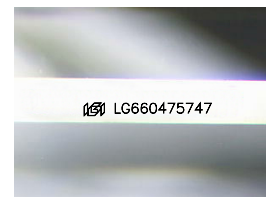


## CLARITY CHARACTERISTICS



## KEY TO SYMBOLS

Red symbols indicate internal characteristics.  
Green symbols indicate external characteristics.



Sample Image Used

## COLOR

D E F G H I J Faint Very Light Light

## CLARITY

IF	VVS <sup>1-2</sup>	VS <sup>1-2</sup>	SI <sup>1-2</sup>	I <sup>1-3</sup>
Internally Flawless	Very Very Slightly Included	Very Slightly Included	Slightly Included	Included



© IGI 2020, International Gemological Institute

FD - 10 20

**www.igi.org**

## LABORATORY GROWN DIAMOND REPORT

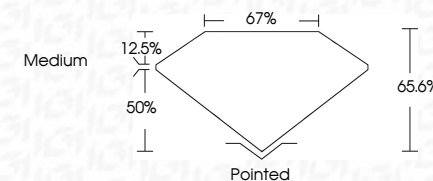


October 19, 2024	
IGI Report Number	LG660475747
Description	LABORATORY GROWN DIAMOND
Shape and Cutting Style	CUT CORNERED RECTANGULAR MODIFIED BRILLIANT

Measurements **9.48 X 6.72 X 4.41 MM**

## GRADING RESULTS

Carat Weight	2.41 CARATS
Color Grade	F
Clarity Grade	VS 1



### ADDITIONAL GRADING INFORMATION

Polish	EXCELLENT
Symmetry	EXCELLENT
Fluorescence	NONE
Inscription(s)	18 LG660475747

Comments: This Laboratory Grown Diamond was created by Chemical Vapor Deposition (CVD) growth process.  
Type IIa



October 19, 2024	GI Report No. LG660475747	2.41 CARATS	VS 1	Pointed	NONE	1691 LG660475747
GI CORNERED RECT. MODIFIED BRILLIANT	Color Grade	65.6%	Excellent	Excellent		
4.8 x 4.7 x 4.41 MM	Depth	67%	Medium	Excellent		
Carat Weight	Table			Fluorescence		
Color	Grain			Inscriptions(s)		

Comments: The Laboratory Grown Diamond was produced using the Chemical Vapor Deposition (CVD) growth process.

Type IIG