



ELECTRONIC COPY

LABORATORY GROWN DIAMOND REPORT

October 21, 2024	
IGI Report Number	LG660488973
Description	LABORATORY GROWN DIAMOND
Shape and Cutting Style	CUT CORNERED RECTANGULAR MODIFIED BRILLIANT
Measurements	7.60 X 5.62 X 3.71 MM

GRADING RESULTS

Carat Weight	1.37 CARAT
Color Grade	F
Clarity Grade	VS 2

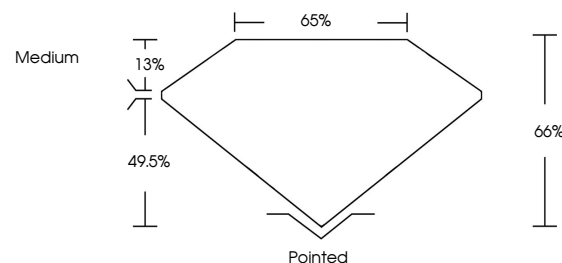
ADDITIONAL GRADING INFORMATION

Polish	EXCELLENT
Symmetry	EXCELLENT
Fluorescence	NONE
Inscription(s)	 LG660488973

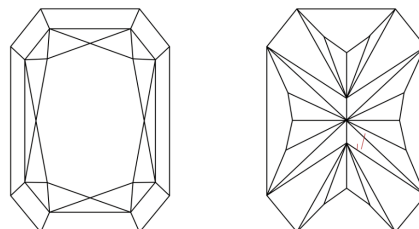
Comments: This Laboratory Grown Diamond was created by Chemical Vapor Deposition (CVD) growth process.
Type IIa

LG660488973
Report verification at lgi.org

PROPORTIONS

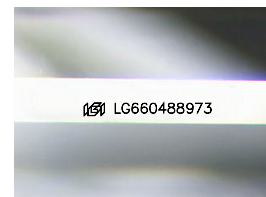


CLARITY CHARACTERISTICS



KEY TO SYMBOLS

Red symbols indicate internal characteristics.
Green symbols indicate external characteristics.



Sample Image Used

COLOR

D E F G H I J Faint Very Light Light

CLARITY

IF	VVS ¹⁻²	VS ¹⁻²	SI ¹⁻²	I ¹⁻³
Internally Flawless	Very Very Slightly Included	Very Slightly Included	Slightly Included	Included



© IGI 2020, International Gemological Institute

FD - 10 20

www.igi.org

LABORATORY GROWN DIAMOND REPORT



October 21, 2024

IGI Report Number LG660488973

Description **LABORATORY GROWN DIAMOND**

Shape and Cutting Style

CUT CORNERED
RECTANGULAR MODIFIED
BRILLIANT

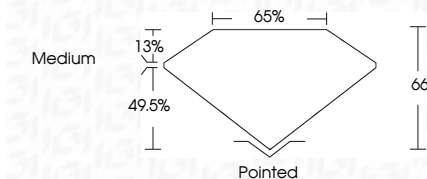
Measurements **7.60 X 5.62 X 3.71 MM**

GRADING RESULTS

Carat Weight 1.37 CARAT

Color Grade

Clarity Grade VS 2



ADDITIONAL GRADING INFORMATION

Polish EXCELLENCE

Symmetry **EXCELLENCE**Fluorescence NONInscription(s) LG66048897

Comments: This Laboratory Grown Diamond was created by Chemical Vapor Deposition (CVD) growth process.
Type IIa



October 21, 2024	GI REPORT NO. LG56048973
G1 CORNERED RECT. MODIFIED BRILLIANT	
1.37 CARAT	
Color	F
Clarity	VS 2
Depth	66%
Table	65%
Girdle	Medium
Culet	Pointed
Polish	EXCELLENT
Symmetry	EXCELLENT
Fluorescence	NONE
Inscriptions(s)	681 LG56048973
Comments:	
This Laboratory Grown Diamond was grown using the Chemical Vapor Deposition (CVD) growth process.	
Type IIa	