



ELECTRONIC COPY

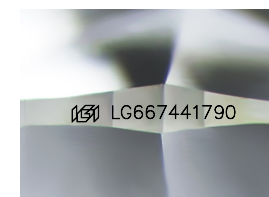
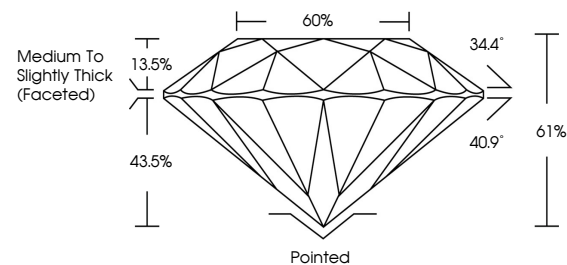
LG667441790
Report verification at igi.org



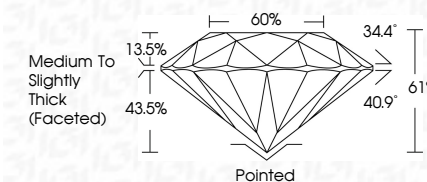
November 30, 2024
IGI Report Number **LG667441790**
Description **LABORATORY GROWN DIAMOND**
Shape and Cutting Style **ROUND BRILLIANT**
Measurements **7.40 - 7.42 X 4.52 MM**
GRADING RESULTS
Carat Weight **1.53 CARAT**
Color Grade **F**
Clarity Grade **VVS 2**
Cut Grade **IDEAL**

November 30, 2024
IGI Report Number **LG667441790**
Description **LABORATORY GROWN DIAMOND**
Shape and Cutting Style **ROUND BRILLIANT**
Measurements **7.40 - 7.42 X 4.52 MM**
GRADING RESULTS
Carat Weight **1.53 CARAT**
Color Grade **F**
Clarity Grade **VVS 2**
Cut Grade **IDEAL**

PROPORTIONS



Sample Image Used



ADDITIONAL GRADING INFORMATION

Polish **EXCELLENT**
Symmetry **EXCELLENT**
Fluorescence **NONE**
Inscription(s) **IGI LG667441790**

Comments: This Laboratory Grown Diamond was created by Chemical Vapor Deposition (CVD) growth process. Type IIa

COLOR

D E F G H I J Faint Very Light Light

CLARITY

IF VS¹⁻² VS¹⁻² SI¹⁻² I¹⁻³
Internally Flawless Very Very Slightly Included Very Slightly Included Slightly Included Included

ADDITIONAL GRADING INFORMATION

Polish **EXCELLENT**
Symmetry **EXCELLENT**
Fluorescence **NONE**
Inscription(s) **IGI LG667441790**
Comments: This Laboratory Grown Diamond was created by Chemical Vapor Deposition (CVD) growth process. Type IIa



IGI

November 30, 2024
IGI Report No **LG667441790**
ROUND BRILLIANT
7.40 - 7.42 X 4.52 MM
1.53 CARAT
Color Grade **F**
Clarity Grade **VVS 2**
Cut Grade **IDEAL**
Depth **61%**
Table **60%**
Girdle **Medium To Slightly Thick (Faceted)**
Culet **Pointed**
Polish **EXCELLENT**
Symmetry **EXCELLENT**
Fluorescence **NONE**
Inscription(s) **IGI LG667441790**
Comments: This Laboratory Grown Diamond was created by Chemical Vapor Deposition (CVD) growth process. Type IIa