

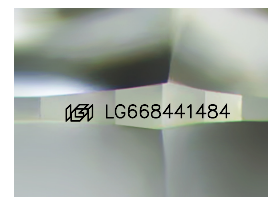
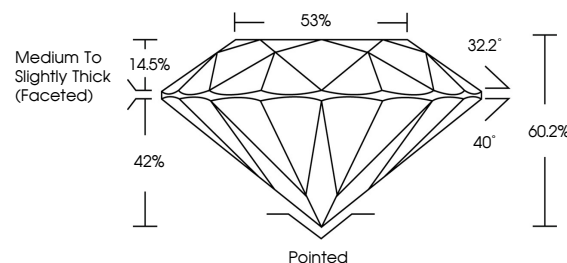


**ELECTRONIC COPY**

## LABORATORY GROWN DIAMOND REPORT

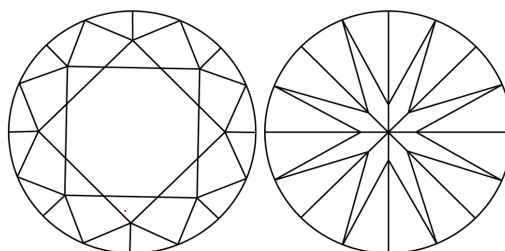
LG668441484  
Report verification at [igi.org](https://igi.org)

## PROPORTIONS



Sample Image Used

## CLARITY CHARACTERISTICS



### KEY TO SYMBOLS

Red symbols indicate internal characteristics.  
Green symbols indicate external characteristics.

## COLOR

D E F G H I J Faint Very Light Light

## CLARITY

IF WS<sup>1-2</sup> VS<sup>1-2</sup> SI<sup>1-2</sup> |<sup>1-3</sup>

Internally Flawless	Very Very Slightly Included	Very Slightly Included	Slightly Included	Included
---------------------	-----------------------------	------------------------	-------------------	----------



January 17, 2025

IGI Report Number **LG668441484**Description **LABORATORY GROWN DIAMOND**Shape and Cutting Style **ROUND BRILLIANT**

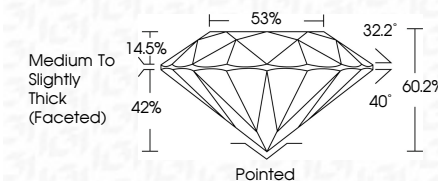
Measurements 9.28 - 9.32 X 5.60 MM

## GRADING RESULTS

Carat Weight **2.97 CARATS**

Color Grade **E**Clarity Grade WS 2

Cut Grade **EXCELLENT**



### ADDITIONAL GRADING INFORMATION

Polish **EXCELLENT**Symmetry **EXCELLENT**

Fluorescence NON

Inscription(s) **13** LG668441484

Comments: This Laboratory Grown Diamond was created by Chemical Vapor Deposition (CVD) growth process.  
Type IIa



© IGI 2020, International Gemological Institute

FD - 10 20

**www.igi.org**



THIS DOCUMENT WAS PRODUCED WITH THE FOLLOWING SECURITY MEASURES: SPECIAL DOCUMENT PAPER, INK SCREENS, WATERMARK, BACKGROUND DESIGNS, HOLOGRAM AND OTHER SECURITY FEATURES NOT LISTED AND DO EXCEED DOCUMENT SECURITY INDUSTRY GUIDELINES

January 17, 2025  
GI Report No LG668441484  
ROUND BRILLIANT

2.97 CARATS	2.97 CARATS
W6 2	W6 2
EXCELLENT	EXCELLENT
60.5%	60.5%
58%	58%
Medium to Slightly Thick (Faceted)	Medium to Slightly Thick (Faceted)
Painted	Painted
EXCELLENT	EXCELLENT
EXCELLENT	EXCELLENT
NONE	NONE

**Comments:**  
This Laboratory Grown Diamond was created by Chemical Vapor Deposition (CVD) growth process.