



**ELECTRONIC COPY**

## LABORATORY GROWN DIAMOND REPORT

LG669479643  
Report verification at [igi.org](https://igi.org)

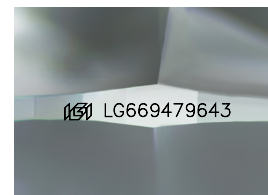
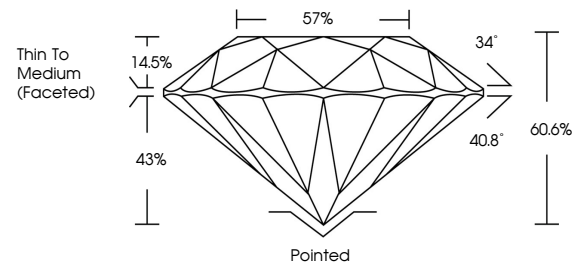
December 18, 2024	
IGI Report Number	LG669479643
Description	LABORATORY GROWN DIAMOND
Shape and Cutting Style	ROUND BRILLIANT
Measurements	7.08 - 7.11 X 4.30 MM
GRADING RESULTS	
Carat Weight	1.31 CARAT
Color Grade	E
Clarity Grade	VS 2
Cut Grade	IDEAL

### ADDITIONAL GRADING INFORMATION

Polish	EXCELLENT
Symmetry	EXCELLENT
Fluorescence	NONE
Inscription(s)	151 LG669479643

Comments: As Grown - No indication of post-growth treatment.  
This Laboratory Grown Diamond was created by High Pressure High Temperature (HPHT) growth process.  
Type II

## PROPORTIONS



Sample Image Used

## COLOR

D E F G H I J Faint Very Light Light

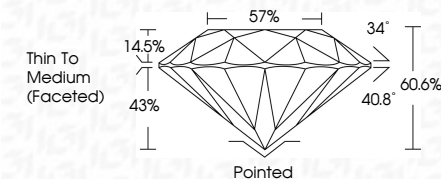
## CLARITY

IF	VS <sup>1-2</sup>	VS <sup>1-2</sup>	SI <sup>1-2</sup>	I <sup>1-3</sup>
Internally Flawless	Very Very Slightly Included	Very Slightly Included	Slightly Included	Included

## LABORATORY GROWN DIAMOND REPORT



December 18, 2024	
IGI Report Number	LG669479643
Description	LABORATORY GROWN DIAMOND
Shape and Cutting Style	ROUND BRILLIANT
Measurements	7.08 - 7.11 X 4.30 MM
GRADING RESULTS	
Carat Weight	1.31 CARAT
Color Grade	E
Clarity Grade	VS 2
Cut Grade	IDEAL



### ADDITIONAL GRADING INFORMATION

Polish	EXCELLENT
Symmetry	EXCELLENT
Fluorescence	NONE
Inscription(s)	<del>(G)</del> LG669479643
Comments: As Grown - No indication of post-growth treatment.	
This Laboratory Grown Diamond was created by High Pressure High Temperature (HPHT) growth process.	
Type II	



© IGI 2020, International Gemological Institute

FD - 10 20



THIS DOCUMENT WAS PRODUCED WITH THE FOLLOWING SECURITY MEASURES: SPECIAL DOCUMENT PAPER, INK SCREENS, WATERMARK, BACKGROUND DESIGNS, HOLOGRAM AND OTHER SECURITY FEATURES NOT LISTED AND DO EXCEED DOCUMENT SECURITY INDUSTRY GUIDELINES

**www.igi.org**

December 18, 2024  
IGI Report No LG669479643  
ROUND BRILLIANT

7.08 - 7.11 X 4.30 MM	1.31 CARAT
Carat Weight	E
Color Grade	VS 2
Clarity Grade	IDEAL
Cut Grade	60.0%
Depth	57%
Table	Thin To Medium
Grade	(Faceted)
Culet	Pointed
Polish	EXCELLENT
Symmetry	EXCELLENT
Fluorescence	NONE
Measurements	4.01 X 4.01 X 2.50

**Comments:**  
As Grown - No indication of post-growth treatment.