

**ELECTRONIC COPY**

## LABORATORY GROWN DIAMOND REPORT

LG669482492  
Report verification at [lgi.org](https://lgi.org)

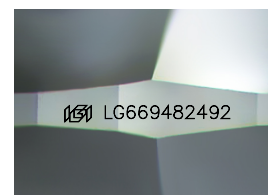
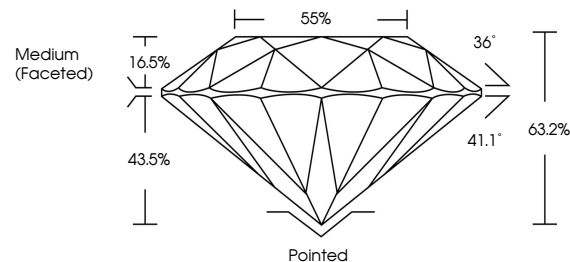
December 16, 2024	
IGI Report Number	LG669482492
Description	LABORATORY GROWN DIAMOND
Shape and Cutting Style	ROUND BRILLIANT
Measurements	6.72 - 6.77 X 4.27 MM
GRADING RESULTS	
Carat Weight	1.19 CARAT
Color Grade	D
Clarity Grade	VS 1
Cut Grade	EXCELLENT

### ADDITIONAL GRADING INFORMATION

Polish	EXCELLENT
Symmetry	EXCELLENT
Fluorescence	NONE
Inscription(s)	15 LG669482492

Comments: As Grown - No indication of post-growth treatment.  
This Laboratory Grown Diamond was created by High Pressure High Temperature (HPHT) growth process.  
Type II

## PROPORTIONS



Sample Image Used

## COLOR

D E F G H I J Faint Very Light Light

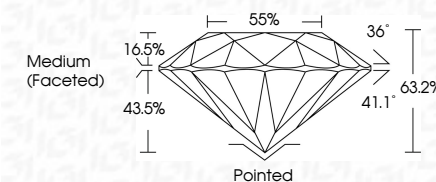
## CLARITY

IF	VS <sup>1-2</sup>	VS <sup>1-2</sup>	SI <sup>1-2</sup>	I <sup>1-3</sup>
Internally Flawless	Very Very Slightly Included	Very Slightly Included	Slightly Included	Included

## LABORATORY GROWN DIAMOND REPORT



December 16, 2024	
IGI Report Number	LG669482492
Description	LABORATORY GROWN DIAMOND
Shape and Cutting Style	ROUND BRILLIANT
Measurements	6.72 - 6.77 X 4.27 MM
GRADING RESULTS	
Carat Weight	1.19 CARAT
Color Grade	D
Clarity Grade	VS 1
Cut Grade	EXCELLENT



### ADDITIONAL GRADING INFORMATION

Polish	EXCELLENT
Symmetry	EXCELLENT
Fluorescence	NONE
Inscription(s)	<del>(G)</del> LG669482492
Comments: As Grown - No indication of post-growth treatment.	
This Laboratory Grown Diamond was created by High Pressure High Temperature (HPHT) growth process.	
Type II	



December 16, 2024  
IGI Report No LG669482492  
ROUND BRILLIANT

6.72 - 6.77 X 4.27 MM	1.19 CARAT	VS 1	EXCELLENT	63.2%	55%	Medium (Excellent)
Carat Weight		Clarity Grade	Cut Grade	Depth	Table	Girdle
Color Grade	D					

Culet	Pointed
Polish	EXCELLENT
Symmetry	EXCELLENT
Fluorescence	NONE

**Comments:**  
As Grown - No indication of post-growth treatment.  
This Laboratory Grown Diamond was created by High Pressure High Temperature (HPHT) growth process.