



ELECTRONIC COPY

LG670426786
Report verification at igi.org



December 20, 2024

IGI Report Number LG670426786

Description LABORATORY GROWN DIAMOND

Shape and Cutting Style ROUND BRILLIANT

Measurements 10.46 - 10.52 X 6.27 MM

GRADING RESULTS

Carat Weight 4.25 CARATS

Color Grade E

Clarity Grade VS 2

Cut Grade IDEAL

December 20, 2024

IGI Report Number LG670426786

Description LABORATORY GROWN DIAMOND

Shape and Cutting Style ROUND BRILLIANT

Measurements 10.46 - 10.52 X 6.27 MM

GRADING RESULTS

Carat Weight 4.25 CARATS

Color Grade E

Clarity Grade VS 2

Cut Grade IDEAL

ADDITIONAL GRADING INFORMATION

Polish EXCELLENT

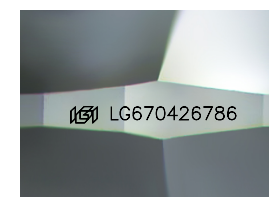
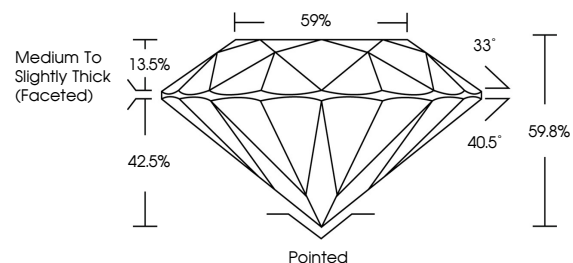
Symmetry EXCELLENT

Fluorescence NONE

Inscription(s) LG670426786

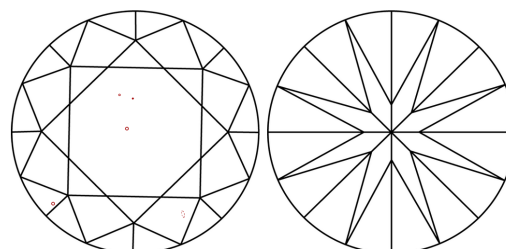
Comments: This Laboratory Grown Diamond was created by Chemical Vapor Deposition (CVD) growth process. Type IIa

PROPORTIONS



Sample Image Used

CLARITY CHARACTERISTICS



KEY TO SYMBOLS

Red symbols indicate internal characteristics. Green symbols indicate external characteristics.

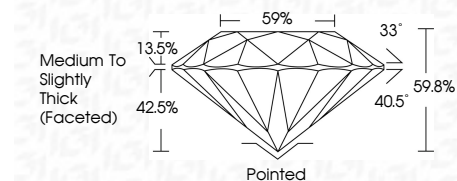
COLOR

D E F G H I J Faint Very Light Light

CLARITY

IF WS 1-2 VS 1-2 SI 1-2 I 1-3

Internally Flawless Very Very Slightly Included Very Slightly Included Slightly Included Included



ADDITIONAL GRADING INFORMATION

Polish EXCELLENT

Symmetry EXCELLENT

Fluorescence NONE

Inscription(s) LG670426786

Comments: This Laboratory Grown Diamond was created by Chemical Vapor Deposition (CVD) growth process. Type IIa



IGI



Summary table of report details: December 20, 2024, IGI Report No LG670426786, ROUND BRILLIANT, 10.46 - 10.52 X 6.27 MM, 4.25 CARATS, E, VS 2, IDEAL, 59.8%, 59%, Medium To Slightly Thick (Faceted), Pointed, EXCELLENT, EXCELLENT, NONE, LG670426786.