



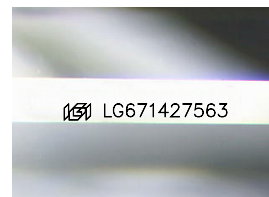
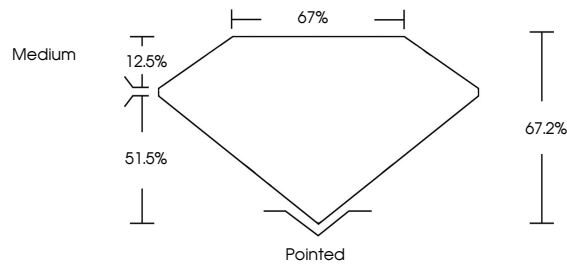
**INTERNATIONAL
GEMOLOGICAL
INSTITUTE**

ELECTRONIC COPY

LABORATORY GROWN DIAMOND REPORT

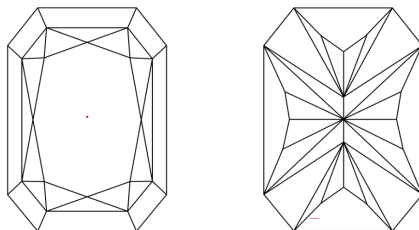
LG671427563
Report verification at [igi.org](https://www.igi.org)

PROPORTIONS



Sample Image Used

CLARITY CHARACTERISTICS



KEY TO SYMBOLS

Red symbols indicate internal characteristics.
Green symbols indicate external characteristics.

COLOR

D E F G H I J Faint Very Light Light

CLARITY

IF WS¹⁻² VS¹⁻² SI¹⁻² I¹⁻³

Internally Flawless	Very Very Slightly Included	Very Slightly Included	Slightly Included	Included
------------------------	--------------------------------	---------------------------	----------------------	----------



December 30, 2024

IGI Report Number **LG671427563**

Description	LABORATORY GROWN DIAMOND
-------------	--------------------------

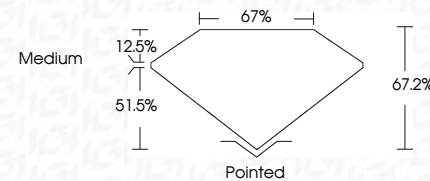
Shape and Cutting Style

CUT CORNERED
RECTANGULAR MODIFIED
BRILLIANT

Measurements 10.39 X 7.23 X 4.86 MM

GRADING RESULTS

Carat Weight **3.10 CARATS**

Color Grade **D**Clarity Grade VVS 2

ADDITIONAL GRADING INFORMATION

Polish **EXCELLENT**Symmetry **EXCELLENT**Fluorescence **NONE**Inscription(s) LG67142756

Comments: This Laboratory Grown Diamond was created by Chemical Vapor Deposition (CVD) growth process.
Type IIa



IG



© IGI 2020, International Gemological Institute

FD - 10 20

www.igi.org

THIS DOCUMENT WAS PRODUCED WITH THE FOLLOWING SECURITY MEASURES: SPECIAL DOCUMENT PAPER, INK SCREENS, WATERMARK, BACKGROUND DESIGNS, HOLOGRAM AND OTHER SECURITY FEATURES NOT LISTED AND DO EXCEED DOCUMENT SECURITY INDUSTRY GUIDELINES

December 30, 2024	
GRI Report No LG971427563	
CUT REPORT RECT. MODIFIED BRILLIANT	
10.97 X 7.28 X 4.66 MM	
Carat Weight	D
Color Grade	Vs2
Clarity Grade	67%
Depth	67%
Table	Medium
Girdle	
Culet	Poished
Polish	EXCELLENT
Symmetry	EXCELLENT
Fluorescence	NONE
Inscription(s)	681 LG971427563
Comments:	
The Laboratory Grown Diamond was created by Chemical Vapor Deposition (CVD) growth process. Type IIa	