



**ELECTRONIC COPY**

## LABORATORY GROWN DIAMOND REPORT

January 11, 2025	
IGI Report Number	LG671437840
Description	LABORATORY GROWN DIAMOND
Shape and Cutting Style	ROUND BRILLIANT
Measurements	9.60 - 9.65 X 5.79 MM
<b>GRADING RESULTS</b>	
Carat Weight	3.32 CARATS
Color Grade	F
Clarity Grade	VS 1
Cut Grade	IDEAL

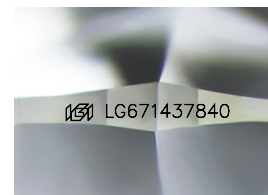
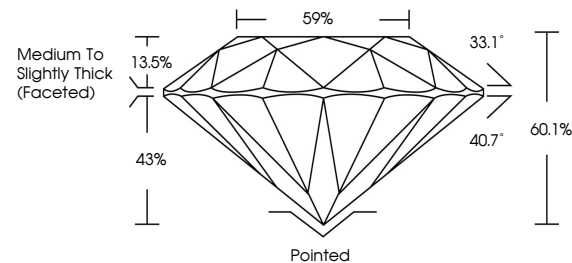
### ADDITIONAL GRADING INFORMATION

Polish	EXCELLENT
Symmetry	EXCELLENT
Fluorescence	NONE
Inscription(s)	16 LG671437840

Comments: This Laboratory Grown Diamond was created by Chemical Vapor Deposition (CVD) growth process.  
Type IIa

LG671437840  
Report verification at [igi.org](https://igi.org)

## PROPORTIONS



Sample Image Used

## COLOR

D E F G H I J Faint Very Light Light

## CLARITY

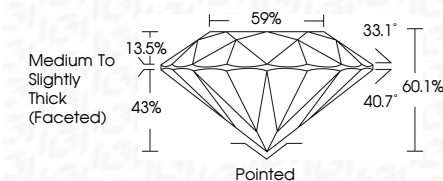
IF                      VS<sup>1-2</sup>                      VS<sup>1-2</sup>                      S<sup>1-2</sup>                      |<sup>1-3</sup>

Internally Flawless	Very Very Slightly Included	Very Slightly Included	Slightly Included	Included
------------------------	--------------------------------	---------------------------	----------------------	----------

## LABORATORY GROWN DIAMOND REPORT



January 11, 2025	
IGI Report Number	LG671437840
Description	LABORATORY GROWN DIAMOND
Shape and Cutting Style	ROUND BRILLIANT
Measurements	9.60 - 9.65 X 5.79 MM
GRADING RESULTS	
Carat Weight	3.32 CARATS
Color Grade	F
Clarity Grade	VS 1
Cut Grade	IDEAL



### ADDITIONAL GRADING INFORMATION

Polish	EXCELLENT
Symmetry	EXCELLENT
Fluorescence	NONE
Inscription(s)	 LG671437840
<p>Comments: This Laboratory Grown Diamond was created by Chemical Vapor Deposition (CVD) growth process.</p> <p>Type Ila</p>	



© IGI 2020, International Gemological Institute

FD - 10 20



THIS DOCUMENT WAS PRODUCED WITH THE FOLLOWING SECURITY MEASURES: SPECIAL DOCUMENT PAPER, INK SCREENS, WATERMARK, BACKGROUND DESIGNS, HOLOGRAM AND OTHER SECURITY FEATURES NOT LISTED AND DO EXCEED DOCUMENT SECURITY INDUSTRY GUIDELINES

**www.igi.org**

