



ELECTRONIC COPY

LABORATORY GROWN DIAMOND REPORT

LG671438139
Report verification at igi.org

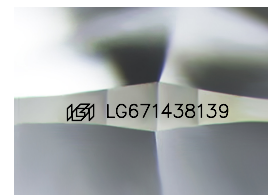
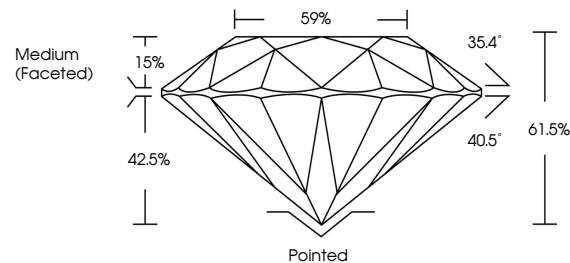
January 6, 2025	
IGI Report Number	LG671438139
Description	LABORATORY GROWN DIAMOND
Shape and Cutting Style	ROUND BRILLIANT
Measurements	9.12 - 9.14 X 5.62 MM
GRADING RESULTS	
Carat Weight	2.93 CARATS
Color Grade	F
Clarity Grade	VS 2
Cut Grade	IDEAL

ADDITIONAL GRADING INFORMATION

Polish	EXCELLENT
Symmetry	EXCELLENT
Fluorescence	NONE
Inscription(s)	 LG671438139

Comments: This Laboratory Grown Diamond was created by Chemical Vapor Deposition (CVD) growth process.
Type IIa

PROPORTIONS



Sample Image Used

COLOR

D E F G H I J Faint Very Light Light

CLARITY

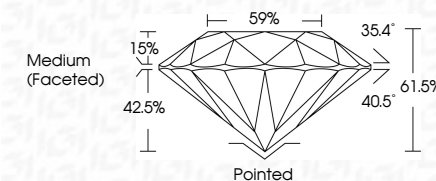
IF WS¹⁻² VS¹⁻² SI¹⁻² |¹⁻³

Internally Flawless	Very Very Slightly Included	Very Slightly Included	Slightly Included	Included
------------------------	--------------------------------	---------------------------	----------------------	----------

LABORATORY GROWN DIAMOND REPORT



January 6, 2025	
IGI Report Number	LG671438139
Description	LABORATORY GROWN DIAMOND
Shape and Cutting Style	ROUND BRILLIANT
Measurements	9.12 - 9.14 X 5.62 MM
GRADING RESULTS	
Carat Weight	2.93 CARATS
Color Grade	F
Clarity Grade	VS 2
Cut Grade	IDEAL



ADDITIONAL GRADING INFORMATION

Polish	EXCELLENT
Symmetry	EXCELLENT
Fluorescence	NONE
Inscription(s)	 LG671438139
<p>Comments: This Laboratory Grown Diamond was created by Chemical Vapor Deposition (CVD) growth process.</p> <p>Type IIa</p>	



© IGI 2020, International Gemological Institute

FD - 10 20

www.igi.org



THIS DOCUMENT WAS PRODUCED WITH THE FOLLOWING SECURITY MEASURES: SPECIAL DOCUMENT PAPER, INK SCREENS, WATERMARK, BACKGROUND DESIGNS, HOLOGRAM AND OTHER SECURITY FEATURES NOT LISTED AND DO EXCEED DOCUMENT SECURITY INDUSTRY GUIDELINE

January 4, 2026	
GI Report No. LG571438139	
ROUND BRILLIANT	
Weight	2.93 CARATS
Color Grade	F
Clarity Grade	VS 2
Cut Grade	IDEAL
Depth	61.5%
Table	89%
Girdle	(Medium) (Faceted)
Fluorescence	Poited
Symmetry	EXCELLENT
Pavilionscance	EXCELLENT
Inscriptions(s)	NONE
	#691LG571438139

Comments:
 Created by Crown Diamond was
 treated by Crown Vapor Deposition
 (CVD) growth process.
 Type IIa