

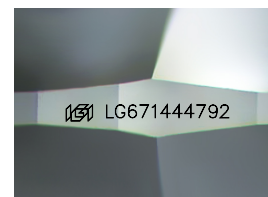
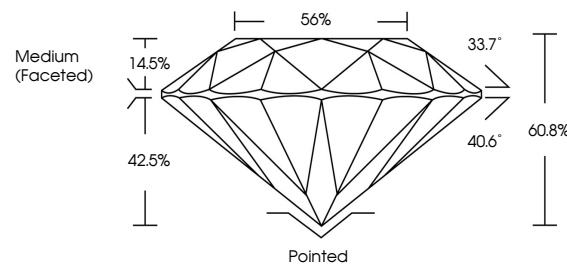


ELECTRONIC COPY

LABORATORY GROWN DIAMOND REPORT

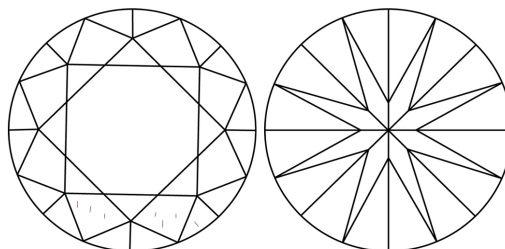
LG671444792
Report verification at lgi.org

PROPORTIONS



Sample Image Used

CLARITY CHARACTERISTICS



KEY TO SYMBOLS

Red symbols indicate internal characteristics.
Green symbols indicate external characteristics.

COLOR

D E F G H I J Faint Very Light Light

CLARITY

IF WS¹⁻² VS¹⁻² SI¹⁻² I¹⁻³

Internally Flawless	Very Very Slightly Included	Very Slightly Included	Slightly Included	Included
------------------------	--------------------------------	---------------------------	----------------------	----------



© IGI 2020, International Gemological Institute

FD - 10 20

www.igi.org

LABORATORY GROWN DIAMOND REPORT



January 1, 2025

IGI Report Number **LG671444792**Description **LABORATORY GROWN DIAMOND**Shape and Cutting Style **ROUND BRILLIANT**

Measurements 7.19 - 7.23 X 4.39 MM

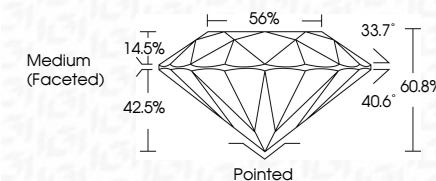
GRADING RESULTS

Carat Weight 1.40 CARAT

Color Grade

Clarity Grade VS 1

Cut Grade **IDEAL**



ADDITIONAL GRADING INFORMATION

Polish EXCELLENT

Symmetry **EXCELLENT**Fluorescence **NONE**Inscription(s) LG671444792

Comments: As Grown - No indication of post-growth treatment.

This Laboratory Grown Diamond was created by High Pressure High Temperature (HPHT) growth process.

Type II



January 1, 2026	1.40 CARAT	VS 1	Pointed	Comments: No Growth - No indication of post-growth treatment. This Laboratory Growth Diamond was created by High Pressure High temperature (HPHT) growth process. Type II
GI Report No LG57144792	D	IDEAL	EXCELLENT	
ROUND BRILLIANT	Carat Weight	60.8%	EXCELLENT	
19 - 19 - 7.23 X 4.35 MM	Color Grade	56%	NONE	
	Clarity Grade	Medium (Faceted)	IGS1 LG57144792	
	Cut Grade	Depth	Culet	
	Clarity Grade	Table	Polish	
	Color Grade	Girdle	Symmetry	
	Fluorescence		Fluorescence	
	Inscriptions (if any)		Inscriptions (if any)	