

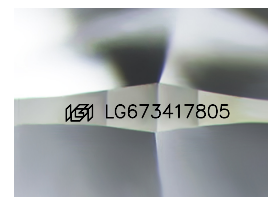
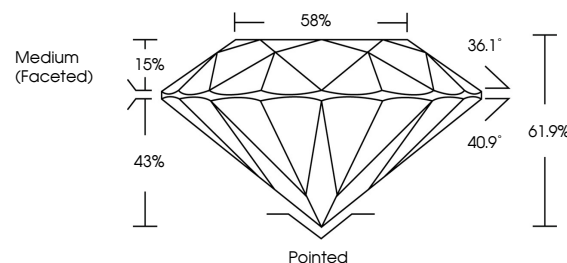


ELECTRONIC COPY

LABORATORY GROWN DIAMOND REPORT

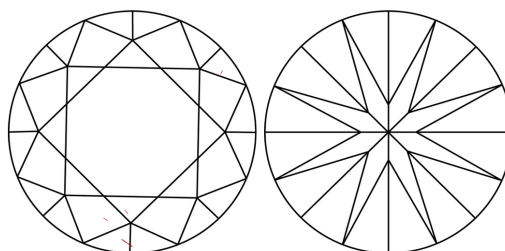
LG673417805
Report verification at igi.org

PROPORTIONS



Sample Image Used

CLARITY CHARACTERISTICS



KEY TO SYMBOLS

Red symbols indicate internal characteristics.
Green symbols indicate external characteristics.

COLOR

D E F G H I J Faint Very Light Light

CLARITY

IF WS¹⁻² VS¹⁻² SI¹⁻² |¹⁻³

Internally Flawless	Very Very Slightly Included	Very Slightly Included	Slightly Included	Included
------------------------	--------------------------------	---------------------------	----------------------	----------



© IGI 2020, International Gemological Institute

FD - 10 20

www.igi.org

LABORATORY GROWN DIAMOND REPORT



January 4, 2025

IGI Report Number **LG673417805**

Description **LABORATORY GROWN DIAMOND**Shape and Cutting Style **ROUND BRILLIANT**

Measurements	6.68 - 6.75 X 4.16 MM
--------------	-----------------------

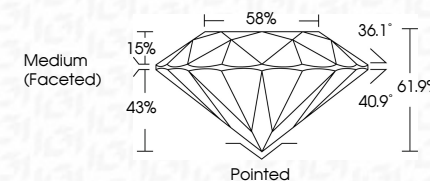
GRADING RESULTS

Carat Weight **1.16 CARAT**

Color Grade D

Clarity Grade VS 1

Cut Grade **IDEAL**



ADDITIONAL GRADING INFORMATION

Polish **EXCELLEN**Symmetry **EXCELLENCE**Fluorescence NONIInscription(s) LG673417805

Comments: As Grown - No indication of post-growth treatment.

This Laboratory Grown Diamond was created by High Pressure High Temperature (HPHT) growth process.

Type II



January 4, 2026	1.16 CARAT
GI Report No. LG573417805	D
ROUND BRILLIANT	VS 1
	IDEAL
	61.9%
	58%
	Medium Faceted
	Pointed
	EXCELLENT
	EXCELLENT
	NONE
	681 LG573417805
Carat Weight	Comments: As Grown - No indication of post-growth treatment
Color Grade	Created by High Pressure High Temperature (HPHT) growth process.
Clarity Grade	
Cut Grade	
Depth	
Table	
Girdle	
Culet	
Polish	
Symmetry	
Fluorescence	
Inscription(s)	