

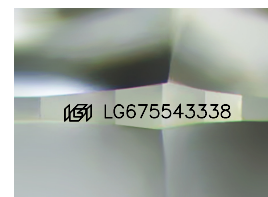
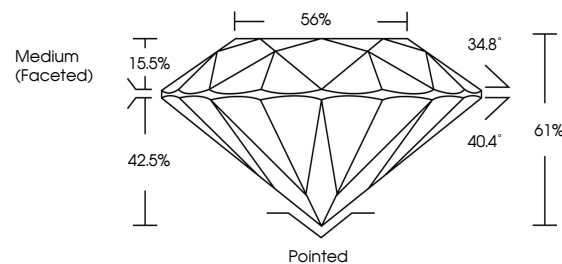


ELECTRONIC COPY

LABORATORY GROWN DIAMOND REPORT

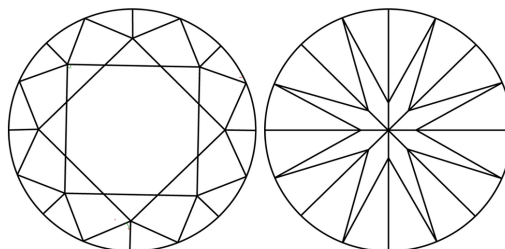
LG675543338
Report verification at igi.org

PROPORTIONS



Sample Image Used

CLARITY CHARACTERISTICS



KEY TO SYMBOLS

Red symbols indicate internal characteristics.
Green symbols indicate external characteristics.

COLOR

D E F G H I J Faint Very Light Light

CLARITY

IF WS¹⁻² VS¹⁻² SI¹⁻² |¹⁻³

Internally Flawless	Very Very Slightly Included	Very Slightly Included	Slightly Included	Included
------------------------	--------------------------------	---------------------------	----------------------	----------



© IGI 2020, International Gemological Institute

FD - 10 20

www.igi.org

LABORATORY GROWN DIAMOND REPORT



February 4, 2025

IGI Report Number **LG675543338**Description **LABORATORY GROWN DIAMOND**Shape and Cutting Style **ROUND BRILLIANT**

Measurements **6.44 - 6.49 X 3.95 MM**

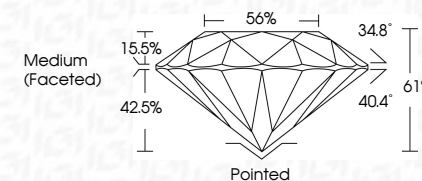
GRADING RESULTS

Carat Weight 1.00 CARAT

Color Grade	E
-------------	---

Clarity Grade VVS 2

Cut Grade **IDEAL**



ADDITIONAL GRADING INFORMATION

Polish **EXCELLENCE**Symmetry **EXCELLENCE**

Fluorescence NONI

Inscription(s) LG67554333

Comments: As Grown - No indication of post-growth treatment.

This Laboratory Grown Diamond was created by High Pressure High Temperature (HPHT) growth process.
Type II



February 4, 2025	IGI Report No. LG570543338	ROUND BRILLIANT	1.00 CARAT	E	VVS 2	IDEAL	61%	56%	Medium (Faceted)	Pointed EXCELLENT EXCELLENT NONE	1691 LG570543338	Comments: None - No indication of post-growth treatment. This Laboratory Growth Diamond was created by High Pressure High Temperature (HPHT) growth process. Type II
			4.64 - 4.49 X 3.95 MM	Color Grade	Clarity Grade	Cut Grade	Depth	Table	Girdle	Culet		
			Carat Weight							Symmetry	Fluorescence	
										Inscriptions		