



**ELECTRONIC COPY**

LG677523808  
Report verification at [igi.org](http://igi.org)



January 25, 2025

IGI Report Number **LG677523808**

Description **LABORATORY GROWN DIAMOND**

Shape and Cutting Style **ROUND BRILLIANT**

Measurements **7.48 - 7.53 X 4.71 MM**

**GRADING RESULTS**

Carat Weight **1.65 CARAT**

Color Grade **F**

Clarity Grade **VS 2**

Cut Grade **EXCELLENT**

January 25, 2025

IGI Report Number **LG677523808**

Description **LABORATORY GROWN DIAMOND**

Shape and Cutting Style **ROUND BRILLIANT**

Measurements **7.48 - 7.53 X 4.71 MM**

**GRADING RESULTS**

Carat Weight **1.65 CARAT**

Color Grade **F**

Clarity Grade **VS 2**

Cut Grade **EXCELLENT**

**ADDITIONAL GRADING INFORMATION**

Polish **EXCELLENT**

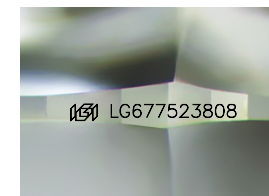
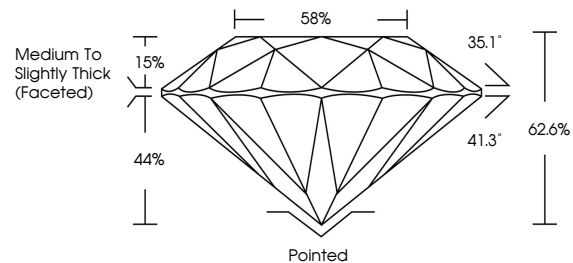
Symmetry **EXCELLENT**

Fluorescence **NONE**

Inscription(s) **IGI LG677523808**

Comments: This Laboratory Grown Diamond was created by Chemical Vapor Deposition (CVD) growth process. Type IIa

**PROPORTIONS**



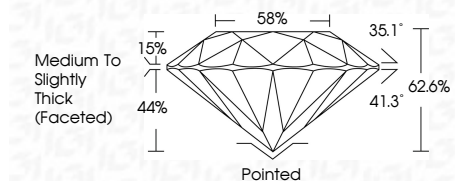
Sample Image Used

**COLOR**

D E F G H I J Faint Very Light Light

**CLARITY**

|                     |                             |                        |                   |                  |
|---------------------|-----------------------------|------------------------|-------------------|------------------|
| IF                  | VS <sup>1-2</sup>           | VS <sup>1-2</sup>      | SI <sup>1-2</sup> | I <sup>1-3</sup> |
| Internally Flawless | Very Very Slightly Included | Very Slightly Included | Slightly Included | Included         |



**ADDITIONAL GRADING INFORMATION**

Polish **EXCELLENT**

Symmetry **EXCELLENT**

Fluorescence **NONE**

Inscription(s) **IGI LG677523808**

Comments: This Laboratory Grown Diamond was created by Chemical Vapor Deposition (CVD) growth process. Type IIa



**IGI**



|                  |                           |                 |                       |            |     |      |           |       |     |                                    |         |           |           |      |                 |
|------------------|---------------------------|-----------------|-----------------------|------------|-----|------|-----------|-------|-----|------------------------------------|---------|-----------|-----------|------|-----------------|
| January 25, 2025 | IGI Report No LG677523808 | ROUND BRILLIANT | 7.48 - 7.53 X 4.71 MM | 1.65 CARAT | F   | VS 2 | EXCELLENT | 62.6% | 35% | Medium To Slightly Thick (Faceted) | Pointed | EXCELLENT | EXCELLENT | NONE | IGI LG677523808 |
| IGI              | IGI                       | IGI             | IGI                   | IGI        | IGI | IGI  | IGI       | IGI   | IGI | IGI                                | IGI     | IGI       | IGI       | IGI  | IGI             |

Comments: This Laboratory Grown Diamond was created by Chemical Vapor Deposition (CVD) growth process. Type IIa