

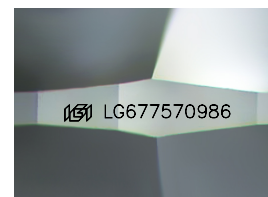
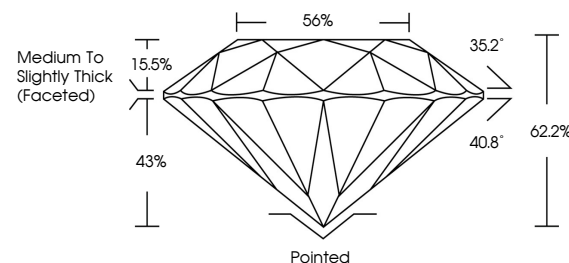


ELECTRONIC COPY

LABORATORY GROWN DIAMOND REPORT

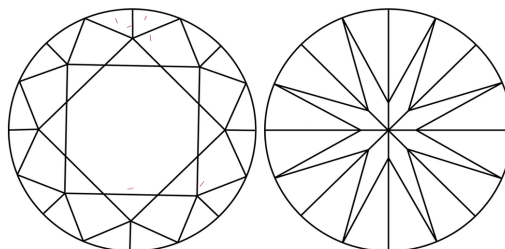
LG677570986
Report verification at igi.org

PROPORTIONS



Sample Image Used

CLARITY CHARACTERISTICS



KEY TO SYMBOLS

Red symbols indicate internal characteristics.
Green symbols indicate external characteristics.

COLOR

D E F G H I J Faint Very Light Light

CLARITY

IF WS¹⁻² VS¹⁻² S¹⁻² |¹⁻³

Internally Flawless	Very Very Slightly Included	Very Slightly Included	Slightly Included	Included
------------------------	--------------------------------	---------------------------	----------------------	----------



© IGI 2020, International Gemological Institute

FD - 10 20

www.igi.org

LABORATORY GROWN DIAMOND REPORT



January 23, 2025

IGI Report Number **LG677570986**Description **LABORATORY GROWN DIAMOND**Shape and Cutting Style **ROUND BRILLIANT**

Measurements 7.10 - 7.15 X 4.44 MM

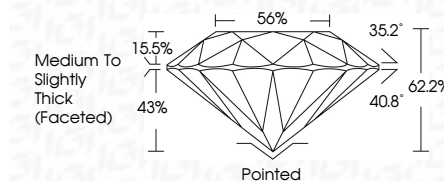
GRADING RESULTS

Carat Weight 1.39 CARAT

Color Grade

Clarity Grade WS 2

Cut Grade **IDEAL**



ADDITIONAL GRADING INFORMATION

Polish **EXCELLENT**Symmetry **EXCELLENT**Fluorescence **NONE**Inscription(s)  LG677570986

Comments: As Grown - No indication of post-growth treatment.

This Laboratory Grown Diamond was created by High Pressure High Temperature (HPHT) growth process.

Type II



January 23, 2025	
GI Report No. LG57570986	
ROUND BRILLIANT	
1.39 CARAT	
E	
VVS 2	
IDEAL	
62.2%	
56%	
Medium to Slightly Thick Faceting	
Pointed	
EXCELLENT	
EXCELLENT	
NONE	
681 LG57570986	

Comments: As Grown - No indication of post-growth treatment.

This Laboratory Grown Diamond was created by High Pressure High Temperature (HPHT) growth process.