

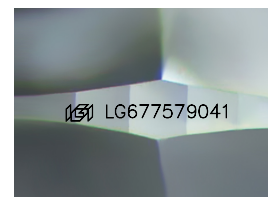
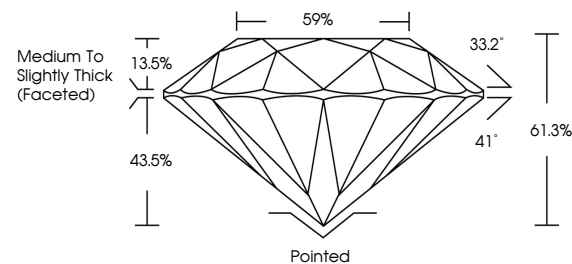


ELECTRONIC COPY

LABORATORY GROWN DIAMOND REPORT

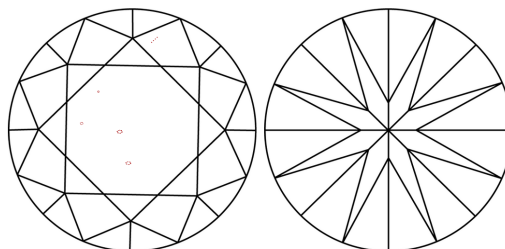
LG677579041
Report verification at igi.org

PROPORTIONS



Sample Image Used

CLARITY CHARACTERISTICS



KEY TO SYMBOLS

Red symbols indicate internal characteristics.
Green symbols indicate external characteristics.

COLOR

D E F G H I J Faint Very Light Light

CLARITY

IF WS¹⁻² VS¹⁻² SI¹⁻² |¹⁻³

Internally Flawless	Very Very Slightly Included	Very Slightly Included	Slightly Included	Included
------------------------	--------------------------------	---------------------------	----------------------	----------



January 23, 2025

IGI Report Number **LG677579041**Description **LABORATORY GROWN DIAMOND**Shape and Cutting Style **ROUND BRILLIANT**

Measurements 8.50 - 8.57 X 5.23 MM

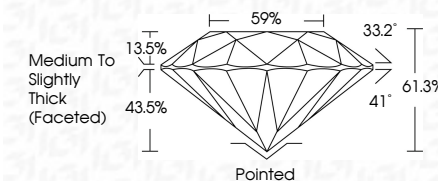
GRADING RESULTS

Carat Weight **2.36 CARATS**

Color Grade **E**

Clarity Grade VS 2

Cut Grade **EXCELLENT**



ADDITIONAL GRADING INFORMATION

Polish **EXCELLENT**Symmetry **EXCELLENT**Fluorescence **NONE**Inscription(s) LG677579041

Comments: This Laboratory Grown Diamond was created by Chemical Vapor Deposition (CVD) growth process.
Type IIa



© IGI 2020, International Gemological Institute

FD - 10 20

www.igi.org



THIS DOCUMENT WAS PRODUCED WITH THE FOLLOWING SECURITY MEASURES: SPECIAL DOCUMENT PAPER, INK SCREENS, WATERMARK, BACKGROUND DESIGNS, HOLOGRAM AND OTHER SECURITY FEATURES NOT LISTED AND DO EXCEED DOCUMENT SECURITY INDUSTRY GUIDELINE

January 23, 2025
GI Report No LG677579041
ROUND BRILLIANT

Carat Weight	0.50 - 0.57 X 5.23 MM
Color Grade	Colorless
Clarity Grade	Very, Very Slightly Included (VVS1-VVS2)
Cut Grade	Excellent
Depth	61.3%
Table	59%
Girdle	Medium to Slightly Thick (Faceted)
Culet	Pointed
Polish	Excellent
Symmetry	Excellent
Fluorescence	None
Report #	6011254775001

Comments:
This Laboratory Grown Diamond was
created by Chemical Vapor Deposition
(CVD) growth process.