

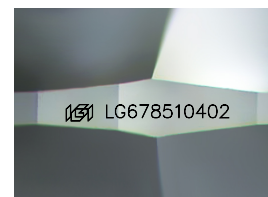
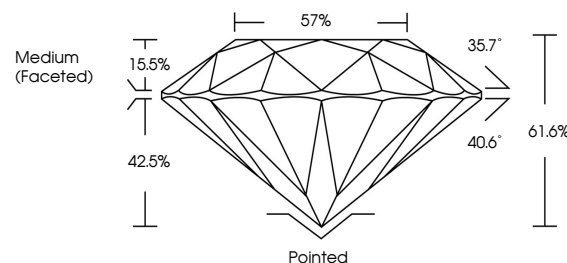


**ELECTRONIC COPY**

## LABORATORY GROWN DIAMOND REPORT

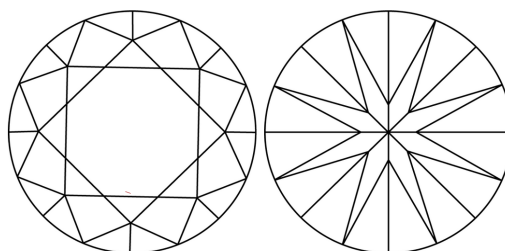
LG678510402  
Report verification at [igi.org](https://igi.org)

## PROPORTIONS



Sample Image Used

## CLARITY CHARACTERISTICS



### KEY TO SYMBOLS

Red symbols indicate internal characteristics.  
Green symbols indicate external characteristics.

## COLOR

D E F G H I J Faint Very Light Light

## CLARITY

IF      WS<sup>1-2</sup>      VS<sup>1-2</sup>      SI<sup>1-2</sup>      I<sup>1-3</sup>

Internally Flawless	Very Very Slightly Included	Very Slightly Included	Slightly Included	Included
------------------------	--------------------------------	---------------------------	----------------------	----------

## LABORATORY GROWN DIAMOND REPORT



March 3, 2025

IGI Report Number **LG678510402**

Description **LABORATORY GROWN DIAMOND**Shape and Cutting Style **ROUND BRILLIANT**

Measurements 6.49 - 6.54 X 4.02 MM

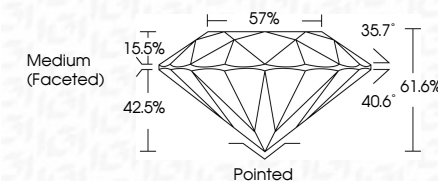
## GRADING RESULTS

Carat Weight **1.05 CARAT**

Color Grade	E
-------------	---

Clarity Grade **VVS 1**

Cut Grade **IDEAL**



### ADDITIONAL GRADING INFORMATION

Polish **EXCELLENT**Symmetry **EXCELLENT**Fluorescence **NONE**Inscription(s)  LG678510402

Comments: As Grown - No indication of post-growth treatment.

This Laboratory Grown Diamond was created by High Pressure High Temperature (HPHT) growth process.  
Type II



© IGI 2020, International Gemological Institute

FD - 10 20



THIS DOCUMENT WAS PRODUCED WITH THE FOLLOWING SECURITY MEASURES: SPECIAL DOCUMENT PAPER, INK SCREENS, WATERMARK, BACKGROUND DESIGNS, HOLOGRAM AND OTHER SECURITY FEATURES NOT LISTED AND DO EXCEED DOCUMENT SECURITY INDUSTRY GUIDELINES

**www.igi.org**

<b>March 3, 2026</b>	<b>GJ Report No LG785 U402</b>	<b>1.05 CARAT</b>
<b>SOUND BRILLIANT</b>		<b>E</b>
<b>49 - 4.6 X 4.02 MM</b>		<b>VVS 1</b>
<b>Color Weight</b>		<b>IDEAL</b>
<b>Cut Grade</b>		<b>61.6%</b>
<b>Clarity Grade</b>		<b>57%</b>
<b>Depth</b>		<b>Medium (Faceted)</b>
<b>Table</b>		<b>Painted</b>
<b>Girdle</b>		<b>EXCELLENT</b>
		<b>EXCELLENT</b>
		<b>NONE</b>
		<b>(#) LG785 U402</b>

**Comments:**  
 as Given - No Indication of post-growth treatment.  
 This Laboratory Grown Diamond was created by High Pressure High Temperature (HPHT) growth process.

Type B1