

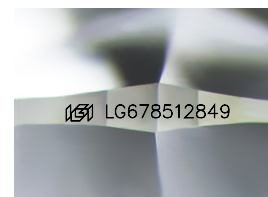
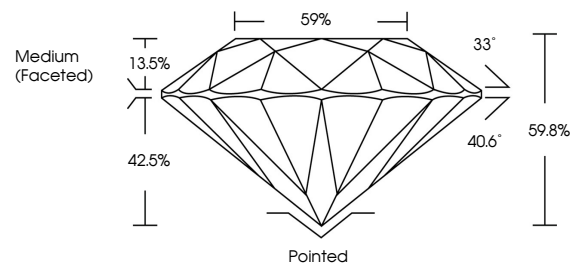


**ELECTRONIC COPY**

## LABORATORY GROWN DIAMOND REPORT

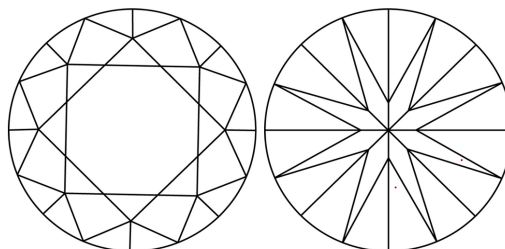
LG678512849  
Report verification at [igi.org](https://igi.org)

## PROPORTIONS



Sample Image Used

## CLARITY CHARACTERISTICS



## KEY TO SYMBOLS

Red symbols indicate internal characteristics.  
Green symbols indicate external characteristics.

## COLOR

D E F G H I J Faint Very Light Light

## CLARITY

IF      WS<sup>1-2</sup>      VS<sup>1-2</sup>      S<sup>1-2</sup>      |<sup>1-3</sup>

Internally Flawless	Very Very Slightly Included	Very Slightly Included	Slightly Included	Included
------------------------	--------------------------------	---------------------------	----------------------	----------



© IGI 2020, International Gemological Institute

FD - 10 20

**www.igi.org**

## LABORATORY GROWN DIAMOND REPORT



March 9, 2025

IGI Report Number **LG678512849**Description **LABORATORY GROWN DIAMOND**Shape and Cutting Style **ROUND BRILLIANT**

Measurements 6.59 - 6.61 X 3.95 MM

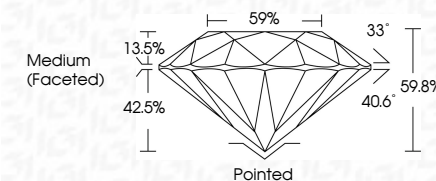
## GRADING RESULTS

Carat Weight **1.05 CARAT**

Color Grade E

Clarity Grade **VVS 1**

Cut Grade **IDEAL**



### ADDITIONAL GRADING INFORMATION

Polish EXCELLENT

Symmetry **EXCELLENT**Fluorescence **NONE**Inscription(s)  LG678512849

Comments: As Grown - No indication of post-growth treatment.

This Laboratory Grown Diamond was created by High Pressure High Temperature (HPHT) growth process.

Type II



March 9, 2025	1.05 CARAT
IG Report No. G578512849	VVS 1
ROUND BRILLIANT	IDEAL
	59.6%
	59%
	Medium (Faced)
	Pointed
	EXCELLENT
	EXCELLENT
	NONE
	IG# LG578512849

Comments: As Grown - No indication of post-growth treatment.

Laboratory Grown Diamond was created by High Pressure High Temperature (HPHT) growth process.