



**ELECTRONIC COPY**

## LABORATORY GROWN DIAMOND REPORT

LG678515426  
Report verification at [igi.org](https://igi.org)

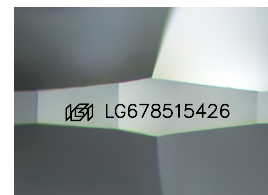
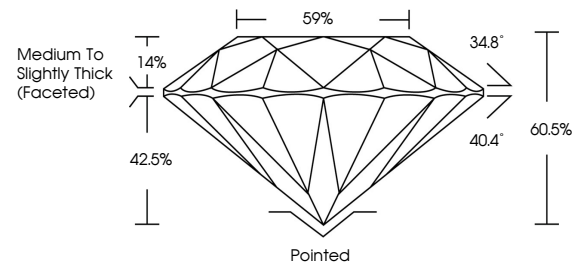
January 25, 2025	
IGI Report Number	LG678515426
Description	LABORATORY GROWN DIAMOND
Shape and Cutting Style	ROUND BRILLIANT
Measurements	9.59 - 9.64 X 5.82 MM
GRADING RESULTS	
Carat Weight	3.35 CARATS
Color Grade	E
Clarity Grade	VS 1
Cut Grade	IDEAL

### ADDITIONAL GRADING INFORMATION

Polish	EXCELLENT
Symmetry	EXCELLENT
Fluorescence	NONE
Inscription(s)	 131 LG678515426

Comments: This Laboratory Grown Diamond was created by Chemical Vapor Deposition (CVD) growth process.  
Type IIa

## PROPORTIONS



Sample Image Used

## COLOR

D E F G H I J Faint Very Light Light

## CLARITY

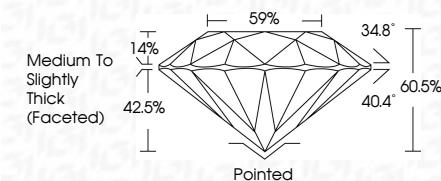
IF                      VS<sup>1-2</sup>                      VS<sup>1-2</sup>                      S<sup>1-2</sup>                      |<sup>1-3</sup>

Internally Flawless	Very Very Slightly Included	Very Slightly Included	Slightly Included	Included
------------------------	--------------------------------	---------------------------	----------------------	----------

## LABORATORY GROWN DIAMOND REPORT



January 25, 2025	
IGI Report Number	LG678515426
Description	LABORATORY GROWN DIAMOND
Shape and Cutting Style	ROUND BRILLIANT
Measurements	9.59 - 9.64 X 5.82 MM
GRADING RESULTS	
Carat Weight	3.35 CARATS
Color Grade	E
Clarity Grade	VS 1
Cut Grade	IDEAL



### ADDITIONAL GRADING INFORMATION

Polish	EXCELLENT
Symmetry	EXCELLENT
Fluorescence	NONE
Inscription(s)	 LG678515426
<p>Comments: This Laboratory Grown Diamond was created by Chemical Vapor Deposition (CVD) growth process.</p> <p>Type IIa</p>	



IG



© IGI 2020, International Gemological Institute

FD - 10 20

**www.igi.org**



THIS DOCUMENT WAS PRODUCED WITH THE FOLLOWING SECURITY MEASURES: SPECIAL DOCUMENT PAPER, INK SCREENS, WATERMARK, BACKGROUND DESIGNS, HOLOGRAM AND OTHER SECURITY FEATURES NOT LISTED AND DO EXCEED DOCUMENT SECURITY INDUSTRY GUIDELINES

January 25, 2025  
GI Report No LG678515426  
ROUND BRILLIANT

3.35 CARATS	Carat Weight	3.35 CARATS
Color Grade	Color Grade	
Clarity Grade	Clarity Grade	
Cut Grade	Cut Grade	
Depth	Depth	
Table	Table	
Grade	Grade	
Culet	Culet	
Polish	Polish	
Symmetry	Symmetry	
Fluorescence	Fluorescence	
Medium to Slightly Thick (Faceted)		
Pointed		
EXCELLENT		
NONE		
100%		

**Comments:**  
This Laboratory Grown Diamond was  
created by Chemical Vapor Deposition  
(CVD) growth process.