

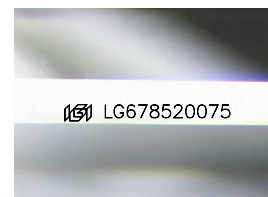
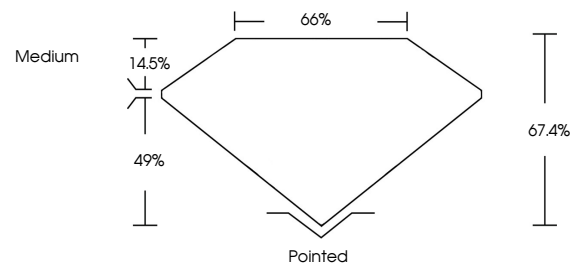


ELECTRONIC COPY

LABORATORY GROWN DIAMOND REPORT

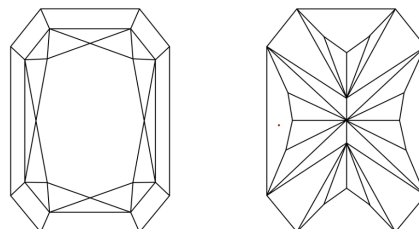
LG678520075
Report verification at lqi.org

PROPORTIONS



Sample Image Used

CLARITY CHARACTERISTICS



KEY TO SYMBOLS

Red symbols indicate internal characteristics.
Green symbols indicate external characteristics.

COLOR

D E F G H I J Faint Very Light Light

CLARITY

IF	VS ¹⁻²	VS ¹⁻²	SI ¹⁻²	I ¹⁻³
Internally Flawless	Very Very Slightly Included	Very Slightly Included	Slightly Included	Included

LABORATORY GROWN DIAMOND REPORT



January 22, 2025

IGI Report Number **LG678520075**Description **LABORATORY GROWN DIAMOND**

Shape and Cutting Style

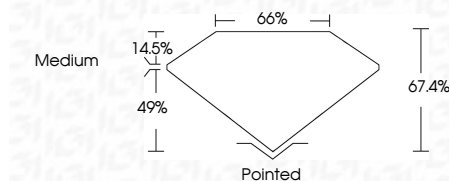
CUT CORNERED
RECTANGULAR MODIFIED
BRILLIANT

Measurements 7.94 X 5.85 X 3.94 MM

GRADING RESULTS

Carat Weight 1.59 CARAT

Color Grade D

Clarity Grade VVS 1

ADDITIONAL GRADING INFORMATION

Polish **EXCELLENT**Symmetry **EXCELLENT**Fluorescence NONEInscription(s) LG678520075

Comments: This Laboratory Grown Diamond was created by Chemical Vapor Deposition (CVD) growth process.
Type IIa



© IGI 2020, International Gemological Institute

FD - 10 20

www.igi.org

THIS DOCUMENT WAS PRODUCED WITH THE FOLLOWING SECURITY MEASURES: SPECIAL DOCUMENT PAPER, INK SCREENS, WATERMARK, BACKGROUND DESIGNS, HOLOGRAM AND OTHER SECURITY FEATURES NOT LISTED AND DO EXCEED DOCUMENT SECURITY INDUSTRY GUIDELINE

January 22, 2025	1.59 CARAT
GI Report No. LG278520075	D
CUT CORNERED RECT. MODIFIED BRILLIANT	VVS 1
	67.4%
	66%
	Medium
	Pointed
	EXCELLENT
	EXCELLENT
	NONE
	66% LG278520075

Comments: This is a Fancy Crown Diamond was created by Chemical Vapor Deposition (CVD) growth process.

Type IIa