

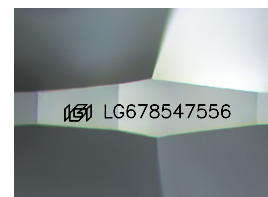
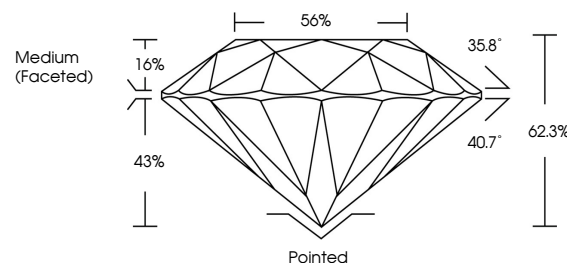


ELECTRONIC COPY

LABORATORY GROWN DIAMOND REPORT

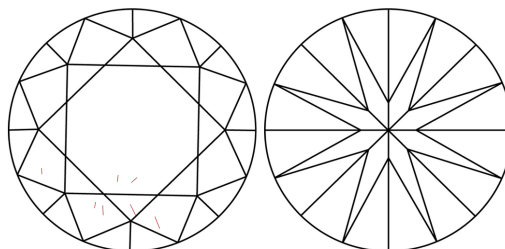
LG678547556
Report verification at igi.org

PROPORTIONS



Sample Image Used

CLARITY CHARACTERISTICS



KEY TO SYMBOLS

Red symbols indicate internal characteristics.
Green symbols indicate external characteristics.

COLOR

D E F G H I J Faint Very Light Light

CLARITY

IF WS¹⁻² VS¹⁻² S¹⁻² |¹⁻³

Internally Flawless	Very Very Slightly Included	Very Slightly Included	Slightly Included	Included
------------------------	--------------------------------	---------------------------	----------------------	----------



© IGI 2020, International Gemological Institute

FD - 10 20

www.igi.org

LABORATORY GROWN DIAMOND REPORT



January 28, 2025

IGI Report Number **LG678547556**Description **LABORATORY GROWN DIAMOND**Shape and Cutting Style **ROUND BRILLIANT**

Measurements 7.82 - 7.84 X 4.88 MM

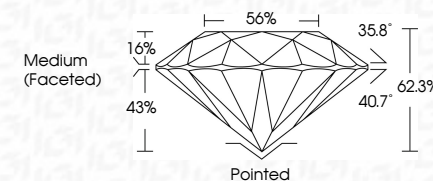
GRADING RESULTS

Carat Weight 1.85 CARAT

Color Grade F

Clarity Grade VS 1

Cut Grade **IDEAL**



ADDITIONAL GRADING INFORMATION

Polish **EXCELLENT**Symmetry **EXCELLENT**Fluorescence **NONE**Inscription(s)  LG678547556

Comments: As Grown - No indication of post-growth treatment.

This Laboratory Grown Diamond was created by High Pressure High Temperature (HPHT) growth process.

Type II



January 28, 2026	
GJ Report No LG7/RS47556	
ROUND BRILLANT	
WT 8.82 - 7.84 X 4.98 MM	
Carat Weight	1.85 CARAT
Color Grade	F
Clarity Grade	VS 1
Cut Grade	IDEAL
Depth	62.3%
Table	55%
Girdle	Medium (Faceted)
Culet	Pointed
Pavil	EXCELLENT
Symmetry	EXCELLENT
Fluorescence	NONE
Inclusions(3)	#88 LG7/RS47556
Comments:	
As Grown - No indication of post-growth treatment.	
This Laboratory Grown Diamond was created by High Pressure High Temperature (HPHT) growth process.	
Type II	