



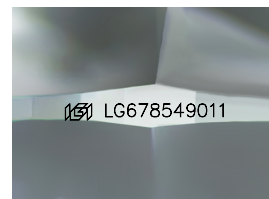
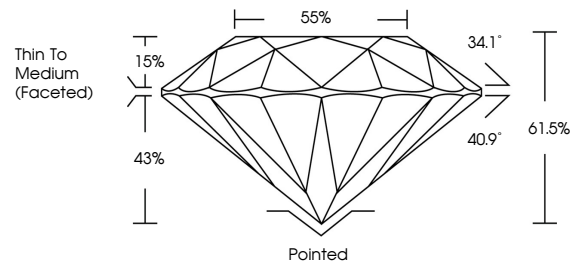
**INTERNATIONAL  
GEMOLOGICAL  
INSTITUTE**

**ELECTRONIC COPY**

## LABORATORY GROWN DIAMOND REPORT

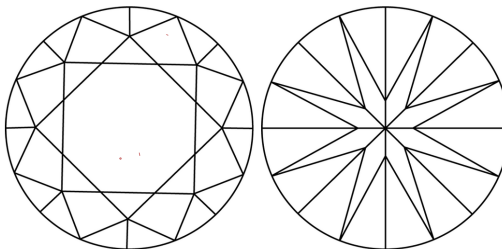
LG678549011  
Report verification at [igi.org](https://igi.org)

## PROPORTIONS



Sample Image Used

## CLARITY CHARACTERISTICS



## KEY TO SYMBOLS

Red symbols indicate internal characteristics.  
Green symbols indicate external characteristics.

**COLOR**

D E F G H I J Faint Very Light Light

## CLARITY

IF      WS<sup>1-2</sup>      VS<sup>1-2</sup>      SI<sup>1-2</sup>      |<sup>1-3</sup>

Internally Flawless	Very Very Slightly Included	Very Slightly Included	Slightly Included	Included
------------------------	--------------------------------	---------------------------	----------------------	----------



February 6, 2025

IGI Report Number **LG678549011**

Description	LABORATORY GROWN DIAMOND
-------------	--------------------------

Shape and Cutting Style **ROUND BRILLIANT**

Measurements 9.60 - 9.65 X 5.92 MM

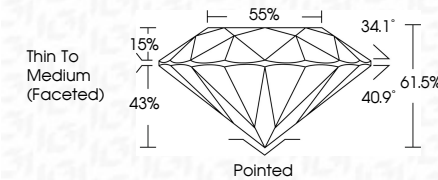
## GRADING RESULTS

Carat Weight **3.33 CARATS**

Color Grade	E
-------------	---

Clarity Grade **VVS 2**

Cut Grade **IDEAL**



### ADDITIONAL GRADING INFORMATION

Polish **EXCELLENCE**Symmetry **EXCELLENCE**

Fluorescence NONI

Inscription(s)  LG67854901

Comments: This Laboratory Grown Diamond was created by Chemical Vapor Deposition (CVD) growth process.  
Type IIa



IG



© IGI 2020, International Gemological Institute

FD - 10 20

**www.igi.org**

THIS DOCUMENT WAS PRODUCED WITH THE FOLLOWING SECURITY MEASURES: SPECIAL DOCUMENT PAPER, INK SCREENS, WATERMARK, DYNAMICALLY DEFORMABLE MICROSCOPIC AND OTHER SECURITY FEATURES, A HOT-TEMPERATURE, AND DO NOT DISCLOSE TO THE PUBLIC. FOR MORE INFORMATION, VISIT [www.dhs.gov](http://www.dhs.gov).

February 6, 2025  
IGI Report No LG678549011  
ROUND BRILLIANT

9.40 - 9.65 X 5.92 MM	3.33 CARATS	
Carat Weight		
Color Grade		
Clarity Grade	VVS 2	Pointed
Cut Grade	IDEAL	EXCELLENT
Depth	61.5%	BETTER
Table		
Girdle	55%	EXCELLENT
	Thin To Medium (girdled)	NONE
		4641 Carats 2011
		International

**Comments:**  
This Laboratory Grown Diamond was created by Chemical Vapor Deposition (CVD) growth process.