



**ELECTRONIC COPY**

## LABORATORY GROWN DIAMOND REPORT

February 9, 2025	
IGI Report Number	LG679501610
Description	LABORATORY GROWN DIAMOND
Shape and Cutting Style	PRINCESS CUT
Measurements	5.96 X 5.90 X 4.21 MM

## GRADING RESULTS

Carat Weight	1.31 CARAT
Color Grade	E
Clarity Grade	VVS 2

### ADDITIONAL GRADING INFORMATION

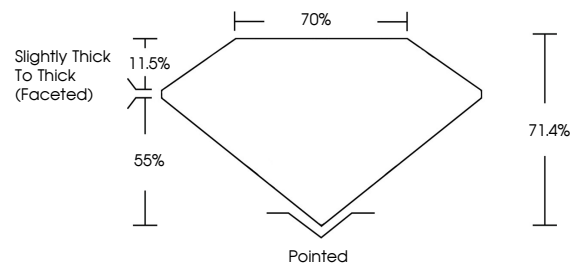
Polish	EXCELLENT
Symmetry	EXCELLENT
Fluorescence	NONE
Inscription(s)	 LG679501610

Comments: As Grown - No indication of post-growth treatment.

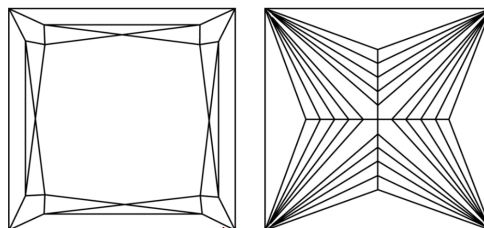
This Laboratory Grown Diamond was created by High Pressure High Temperature (HPHT) growth process.  
Type II

LG679501610  
Report verification at [igi.org](https://igi.org)

## PROPORTIONS

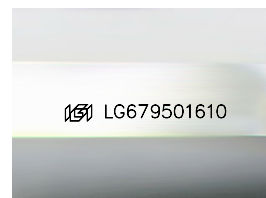


## CLARITY CHARACTERISTICS



## KEY TO SYMBOLS

Red symbols indicate internal characteristics.  
Green symbols indicate external characteristics.



Sample Image Used

**COLOR**

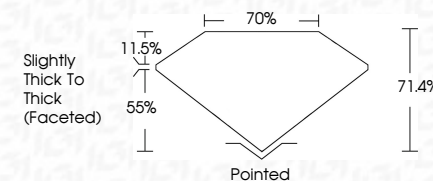
D E F G H I J Faint Very Light Light

## CLARITY

IF	VVS <sup>1-2</sup>	VS <sup>1-2</sup>	SI <sup>1-2</sup>	I <sup>1-3</sup>
Internally Flawless	Very Very Slightly Included	Very Slightly Included	Slightly Included	Included



February 9, 2025	
IGI Report Number	LG679501610
Description	LABORATORY GROWN DIAMOND
Shape and Cutting Style	PRINCESS CUT
Measurements	5.96 X 5.90 X 4.21 MM
<b>GRADING RESULTS</b>	
Carat Weight	1.31 CARAT
Color Grade	E
Clarity Grade	VVS 2



### ADDITIONAL GRADING INFORMATION

Polish	EXCELLENT
Symmetry	EXCELLENT
Fluorescence	NONE
Inscription(s)	 LG679501610
Comments: As Grown - No indication of post-growth treatment.	
This Laboratory Grown Diamond was created by High Pressure High Temperature (HPHT) growth process.	
Type II	



© IGI 2020, International Gemological Institute

FD - 10 20



THIS DOCUMENT WAS PRODUCED WITH THE FOLLOWING SECURITY MEASURES: SPECIAL DOCUMENT PAPER, INK SCREENS, WATERMARK, BACKGROUND DESIGNS, HOLOGRAM AND OTHER SECURITY FEATURES NOT LISTED AND DO EXCEED DOCUMENT SECURITY INDUSTRY GUIDELINES

**www.igi.org**

<b>February 9, 2026</b>	
<b>GJ Report No LG579501610</b>	
<b>PRINCESS CUT</b>	
<b>58 X 58 X 5.90 x 4.21 MM</b>	<b>1.31 CARAT</b>
<b>Coral Weight</b>	<b>E</b>
<b>Color Grade</b>	<b>VVS 2</b>
<b>Clarity Grade</b>	<b>71.4%</b>
<b>Depth</b>	<b>70%</b>
<b>Table</b>	<b>Slightly Thick to Thick (Faceted)</b>
<b>Girdle</b>	<b>Pointed</b>
<b>Culet</b>	<b>EXCELLENT</b>
<b>Poleth</b>	<b>B'CELENT</b>
<b>Symmetry</b>	<b>B'CELENT</b>
<b>Fluorescence</b>	<b>NONE</b>
<b>Inscriptions(s)</b>	<b>888 LG579501610</b>

**Comments:** - No indication of post-growth treatment.  
This Laboratory Growth Diamond was created by High Pressure High Temperature (HPHT) growth process.  
**Type II**

**Comments:**  
As Grown - No Indication of post-growth treatment.  
This Laboratory Grown Diamond was created by High Pressure High Temperature (HPHT) growth process.