



**ELECTRONIC COPY**

## LABORATORY GROWN DIAMOND REPORT

|                         |                          |
|-------------------------|--------------------------|
| February 11, 2025       |                          |
| IGI Report Number       | LG679501666              |
| Description             | LABORATORY GROWN DIAMOND |
| Shape and Cutting Style | ROUND BRILLIANT          |
| Measurements            | 9.72 - 9.78 X 6.04 MM    |

## GRADING RESULTS

|               |             |
|---------------|-------------|
| Carat Weight  | 3.56 CARATS |
| Color Grade   | E           |
| Clarity Grade | VVS 1       |
| Cut Grade     | IDEAL       |

### ADDITIONAL GRADING INFORMATION

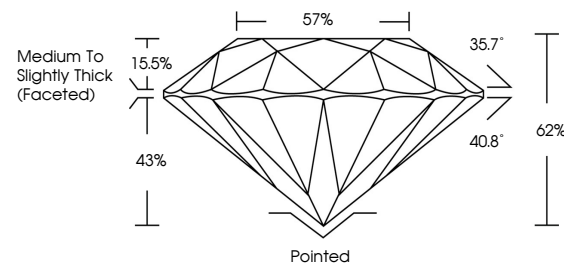
|                |   |
|----------------|---|
| Polish         | EXCELLENT   |
| Symmetry       | EXCELLENT   |
| Fluorescence   | NONE  |
| Inscription(s) |  LG679501666 |

Comments: As Grown - No indication of post-growth treatment.

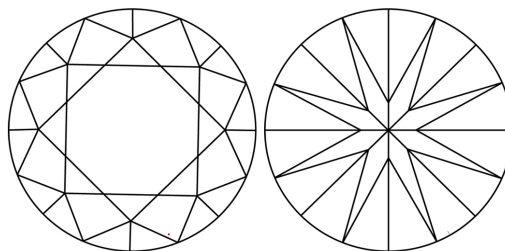
This Laboratory Grown Diamond was created by High Pressure High Temperature (HPHT) growth process.  
Type II

LG679501666  
Report verification at [igi.org](https://igi.org)

## PROPORTIONS

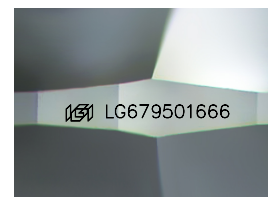


## CLARITY CHARACTERISTICS



## KEY TO SYMBOLS

Red symbols indicate internal characteristics.  
Green symbols indicate external characteristics.



Sample Image Used

## COLOR

D E F G H I J Faint Very Light Light

## CLARITY

IF                      WS<sup>1-2</sup>                      VS<sup>1-2</sup>                      SI<sup>1-2</sup>                      I<sup>1-3</sup>

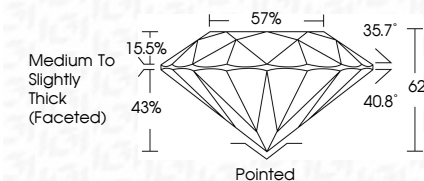
| Internally<br>Flawless | Very Very<br>Slightly Included | Very<br>Slightly Included | Slightly<br>Included | Included |
|------------------------|--------------------------------|---------------------------|----------------------|----------|
|------------------------|--------------------------------|---------------------------|----------------------|----------|



|                         |                          |
|-------------------------|--------------------------|
| February 11, 2025       |                          |
| IGI Report Number       | LG679501666              |
| Description             | LABORATORY GROWN DIAMOND |
| Shape and Cutting Style | ROUND BRILLIANT          |
| Measurements            | 9.72 - 9.78 X 6.04 MM    |

## GRADING RESULTS

|               |             |
|---------------|-------------|
| Carat Weight  | 3.56 CARATS |
| Color Grade   | E           |
| Clarity Grade | VVS 1       |
| Cut Grade     | IDEAL       |



### ADDITIONAL GRADING INFORMATION

|                |                  |
|----------------|------------------|
| Polish         | EXCELLENT        |
| Symmetry       | EXCELLENT        |
| Fluorescence   | NONE             |
| Inscription(s) | (15) LG679501666 |

Comments: As Grown - No indication of post-growth treatment.  
This Laboratory Grown Diamond was created by High Pressure High Temperature (HPHT) growth process.  
Type II



© IGI 2020, International Gemological Institute

FD - 10 20



THIS DOCUMENT WAS PRODUCED WITH THE FOLLOWING SECURITY MEASURES: SPECIAL DOCUMENT PAPER, INK SCREENS, WATERMARK, BACKGROUND DESIGNS, HOLOGRAM AND OTHER SECURITY FEATURES NOT LISTED AND DO EXCEED DOCUMENT SECURITY INDUSTRY GUIDELINES

**www.igi.org**

February 11, 2025  
IGI Report No LG679501666  
ROUND BRILLIANT

|                       |               |                                    |
|-----------------------|---------------|------------------------------------|
| 9.72 - 9.78 X 4.04 MM | Carat Weight  | 3.56 CARATS                        |
|                       | Color Grade   | E                                  |
|                       | Clarity Grade | VS 1                               |
|                       | Cut Grade     | IDEAL                              |
|                       | Depth         | 66%                                |
|                       | Table         | 57%                                |
|                       | Girdle        | Medium to Slightly Thick (Faceted) |
|                       | Culet         | Pointed                            |
|                       | Polish        | EXCELLENT                          |
|                       | Symmetry      | EXCELLENT                          |
|                       | Fluorescence  | NONE                               |

**Comments:**  
As Grown - No indication of post-growth treatment.  
This Laboratory Grown Diamond was created by High Pressure High Temperature (HPHT) growth process.