

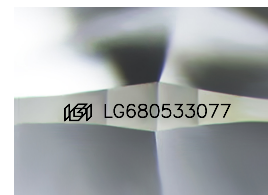
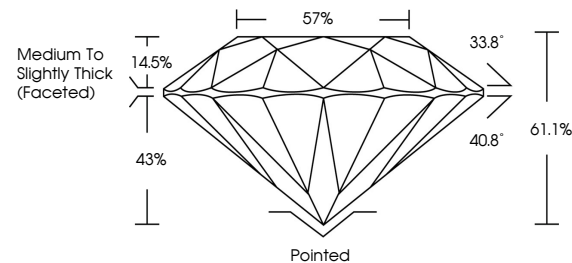


ELECTRONIC COPY

LABORATORY GROWN DIAMOND REPORT

LG680533077
Report verification at igi.org

PROPORTIONS



Sample Image Used

COLOR

D E F G H I J Faint Very Light Light

CLARITY

IF	VVS ¹⁻²	VS ¹⁻²	SI ¹⁻²	I ¹⁻³
Internally Flawless	Very Very Slightly Included	Very Slightly Included	Slightly Included	Included



© IGI 2020, International Gemological Institute

FD - 10 20

www.igi.org

LABORATORY GROWN DIAMOND REPORT



January 31, 2025

IGI Report Number **LG680533077**Description **LABORATORY GROWN DIAMOND**Shape and Cutting Style **ROUND BRILLIANT**

Measurements 8.48 - 8.52 X 5.19 MM

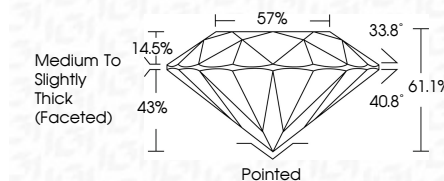
GRADING RESULTS

Carat Weight **2.31 CARATS**

Color Grade **E**

Clarity Grade VS 1

Cut Grade **IDEAL**



ADDITIONAL GRADING INFORMATION

Polish **EXCELLENT**Symmetry **EXCELLENT**Fluorescence **NONE**Inscription(s) LG680533077

Comments: This Laboratory Grown Diamond was created by Chemical Vapor Deposition (CVD) growth process.
Type IIa



January 31, 2025	2.31 CARATS
GL Report No. LG60653077	
ROUND BRILLIANT	
Weight: 2.31	
Color: G	
Clarity: VS1	
Cut: Excellent	
Measurements: 6.52 x 5.17 mm	
Table: 57%	
Depth: 61.1%	
Girdle: Medium to Slightly Thick (Featured)	
Culet: Pointed	
Polish: Excellent	
Symmetry: Excellent	
Fluorescence: None	
Inscription(s): #691LG60653077	
Comments: This Laboratory Grown Diamond was created by Chemical Vapor Deposition (CVD) growth process.	
Type IIA	