



ELECTRONIC COPY

LG680533120
Report verification at igi.org



February 1, 2025

IGI Report Number **LG680533120**

Description **LABORATORY GROWN DIAMOND**

Shape and Cutting Style **CUSHION BRILLIANT**

Measurements **7.83 X 6.87 X 4.52 MM**

GRADING RESULTS

Carat Weight **1.84 CARAT**

Color Grade **E**

Clarity Grade **VS 1**

February 1, 2025

IGI Report Number **LG680533120**

Description **LABORATORY GROWN DIAMOND**

Shape and Cutting Style **CUSHION BRILLIANT**

Measurements **7.83 X 6.87 X 4.52 MM**

GRADING RESULTS

Carat Weight **1.84 CARAT**

Color Grade **E**

Clarity Grade **VS 1**

ADDITIONAL GRADING INFORMATION

Polish **EXCELLENT**

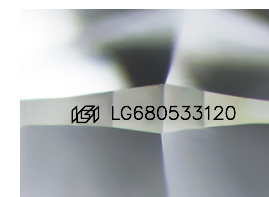
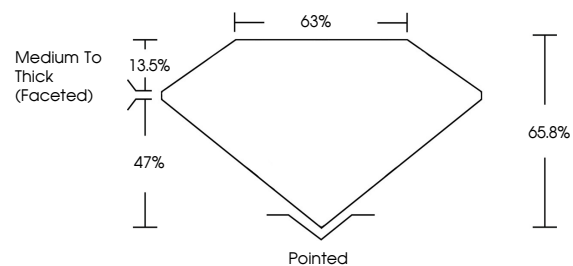
Symmetry **EXCELLENT**

Fluorescence **NONE**

Inscription(s) **LG680533120**

Comments: This Laboratory Grown Diamond was created by Chemical Vapor Deposition (CVD) growth process.
Type IIa

PROPORTIONS



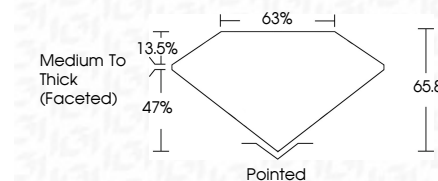
Sample Image Used

COLOR

D E F G H I J Faint Very Light Light

CLARITY

IF	WS ¹⁻²	VS ¹⁻²	SI ¹⁻²	I ¹⁻³
Internally Flawless	Very Very Slightly Included	Very Slightly Included	Slightly Included	Included



ADDITIONAL GRADING INFORMATION

Polish **EXCELLENT**

Symmetry **EXCELLENT**

Fluorescence **NONE**

Inscription(s) **LG680533120**

Comments: This Laboratory Grown Diamond was created by Chemical Vapor Deposition (CVD) growth process.
Type IIa



IGI



February 1, 2025
IGI Report No **LG680533120**
CUSHION BRILLIANT
7.83 X 6.87 X 4.52 MM
1.84 CARAT
E
VS 1
65.8%
63%
Medium To Thick (Faceted)
Pointed
EXCELLENT
EXCELLENT
NONE
None
 LG680533120

Comments: This Laboratory Grown Diamond was created by Chemical Vapor Deposition (CVD) growth process.
Type IIa