



**INTERNATIONAL
GEMOLOGICAL
INSTITUTE**

ELECTRONIC COPY

LG680533413
Report verification at igi.org

LABORATORY GROWN DIAMOND REPORT



January 31, 2025

IGI Report Number **LG680533413**

Description	LABORATORY GROWN DIAMOND
-------------	--------------------------

Shape and Cutting Style **ROUND BRILLIANT**

Measurements 9.51 - 9.57 X 5.74 MM

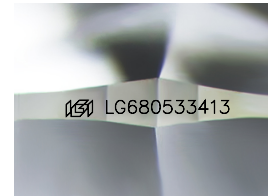
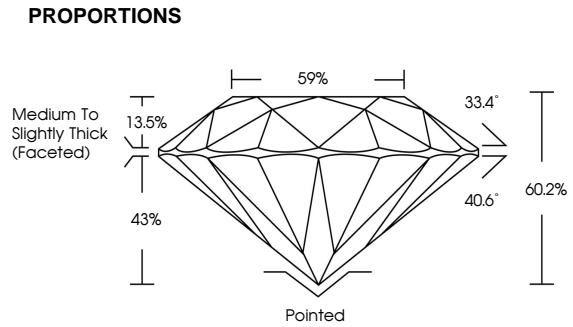
GRADING RESULTS

Carat Weight **3.23 CARATS**

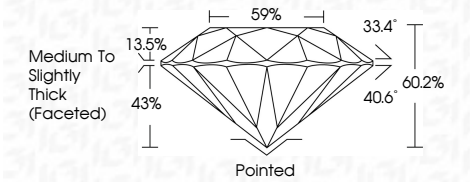
Color Grade	F
-------------	---

Clarity Grade VS 1

Cut Grade **IDEAL**



Sample Image Used



COLOR

D E F G H I J Faint Very Light Light

CLARITY

IF WS¹⁻² VS¹⁻² SI¹⁻² I¹⁻³

Internally Flawless	Very Very Slightly Included	Very Slightly Included	Slightly Included	Included
------------------------	--------------------------------	---------------------------	----------------------	----------



© IGI 2020, International Gemological Institute

FD - 10 20

www.igi.org



THIS DOCUMENT WAS PRODUCED WITH THE FOLLOWING SECURITY MEASURES: SPECIAL DOCUMENT PAPER, INK SCREENS, WATERMARK, BACKGROUND DESIGNS, HOLOGRAM AND OTHER SECURITY FEATURES NOT LISTED AND DO EXCEED DOCUMENT SECURITY INDUSTRY GUIDELINES



IGI

January 31, 2025
IGI Report No LG680533413
ROUND BRILLIANT

9.51 - 9.57 X 5.74 MM
Carat Weight 3.23 CARATS

Color Grade	F
-------------	---

Clarity Grade	VS 1	IDEAL
Out Grade		

Depth	80.2%
Table	59%
Circle	14.8%

Medium to Slightly Thick (Faceted)

Culet	Pointed
Polish	EXCELLENT

Symmetry	EXCELLENT
Fluorescence	NONE
Insulation(e)	45% C-690533413

Comments:

This Laboratory Grown Diamond was created by Chemical Vapor Deposition (CVD) growth process.

Type IIa