

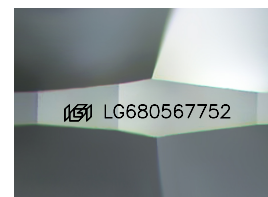
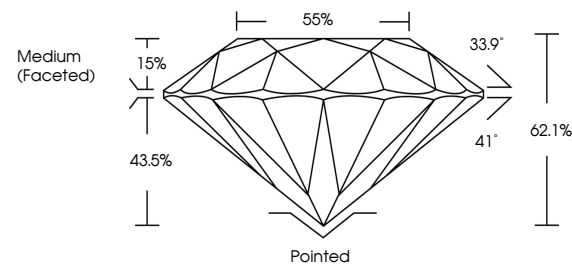


**ELECTRONIC COPY**

## LABORATORY GROWN DIAMOND REPORT

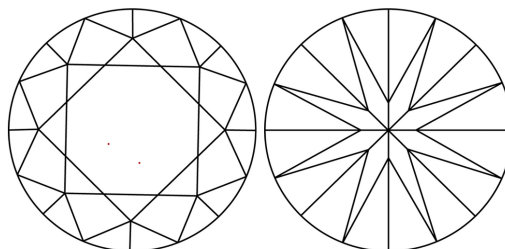
LG680567752  
Report verification at [igi.org](https://igi.org)

## PROPORTIONS



Sample Image Used

## CLARITY CHARACTERISTICS



## KEY TO SYMBOLS

Red symbols indicate internal characteristics.  
Green symbols indicate external characteristics.

## COLOR

D E F G H I J Faint Very Light Light

## CLARITY

IF WS<sup>1-2</sup> VS<sup>1-2</sup> SI<sup>1-2</sup> |<sup>1-3</sup>

Internally Flawless	Very Very Slightly Included	Very Slightly Included	Slightly Included	Included
------------------------	--------------------------------	---------------------------	----------------------	----------

## LABORATORY GROWN DIAMOND REPORT



March 7, 2025

IGI Report Number **LG680567752**Description **LABORATORY GROWN DIAMOND**Shape and Cutting Style **ROUND BRILLIANT**

Measurements 10.20 - 10.22 X 6.34 MM

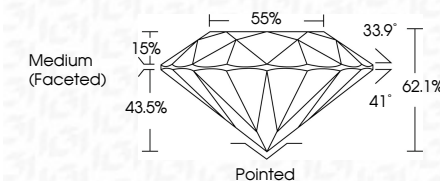
## GRADING RESULTS

Carat Weight **4.03 CARATS**

Color Grade

Clarity Grade **VS 2**

Cut Grade **IDEAL**



### ADDITIONAL GRADING INFORMATION

Polish EXCELLENT

Symmetry **EXCELLENT**Fluorescence **NONE**Inscription(s)  LG680567752

Comments: This Laboratory Grown Diamond was created by Chemical Vapor Deposition (CVD) growth process.  
Type IIa



**www.igi.org**

© IGI 2020, International Gemological Institute

FD - 10 20



THIS DOCUMENT WAS PRODUCED WITH THE FOLLOWING SECURITY MEASURES: SPECIAL DOCUMENT PAPER, INK SCREENS, WATERMARK, BACKGROUND DESIGNS, HOLOGRAM AND OTHER SECURITY FEATURES NOT LISTED AND DO EXCEED DOCUMENT SECURITY INDUSTRY GUIDELINE

March 7, 2025	GI Report No. LG490567/752	4.03 CARATS	F	VVS 2	Pointed
ROUND BRILLIANT				IDEAL	EXCELLENT
10.20 - 10.22 X 6.34 MM				62.1%	EXCELLENT
Color Weight				55%	NONE
Color Grade				Medium (Fooled)	#69 LG490567/752
Clarity Grade					Comments:
Color Grade					This Laboratory Grown Diamond was
Depth					created by Chemical Vapor Deposition
Table					(CVD) growth process.
Girdle					Type IIA
Culet					
Polish					
Symmetry					
Fluorescence					
Inscriptions(s)					