



ELECTRONIC COPY

LABORATORY GROWN DIAMOND REPORT

February 10, 2025	
IGI Report Number	LG681513597
Description	LABORATORY GROWN DIAMOND
Shape and Cutting Style	CUT CORNERED RECTANGULAR MODIFIED BRILLIANT
Measurements	10.18 X 7.08 X 4.77 MM

GRADING RESULTS

Carat Weight	3.05 CARATS
Color Grade	G
Clarity Grade	VVS 1

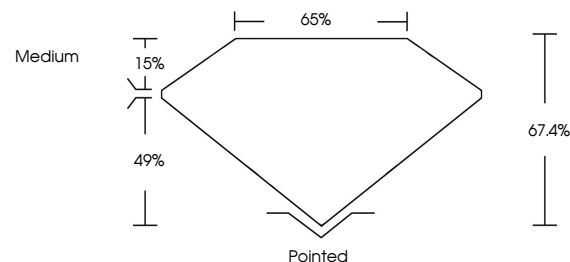
ADDITIONAL GRADING INFORMATION

Polish	EXCELLENT
Symmetry	EXCELLENT
Fluorescence	NONE
Inscription(s)	 LG681513597

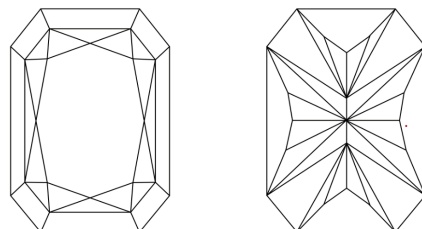
Comments: This Laboratory Grown Diamond was created by Chemical Vapor Deposition (CVD) growth process.
Type IIa

LG681513597
Report verification at lgi.org

PROPORTIONS

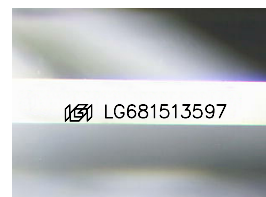


CLARITY CHARACTERISTICS



KEY TO SYMBOLS

Red symbols indicate internal characteristics.
Green symbols indicate external characteristics.



Sample Image Used

COLOR

D E F G H I J Faint Very Light Light

CLARITY

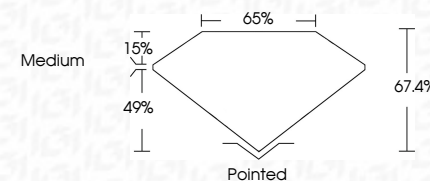
IF VWS¹⁻² VS¹⁻² SI¹⁻² I¹⁻³

Internally Flawless	Very Very Slightly Included	Very Slightly Included	Slightly Included	Included
------------------------	--------------------------------	---------------------------	----------------------	----------

LABORATORY GROWN DIAMOND REPORT



February 10, 2025	
IGI Report Number	LG681513597
Description	LABORATORY GROWN DIAMOND
Shape and Cutting Style	CUT CORNERED RECTANGULAR MODIFIED BRILLIANT
Measurements	10.18 X 7.08 X 4.77 MM
GRADING RESULTS	
Carat Weight	3.05 CARATS
Color Grade	G
Clarity Grade	VVS 1



ADDITIONAL GRADING INFORMATION

Polish	EXCELLENT
Symmetry	EXCELLENT
Fluorescence	NONE
Inscription(s)	 LG681513597
<p>Comments: This Laboratory Grown Diamond was created by Chemical Vapor Deposition (CVD) growth process.</p> <p>Type IIa</p>	



© IGI 2020, International Gemological Institute

FD - 10 20



THIS DOCUMENT WAS PRODUCED WITH THE FOLLOWING SECURITY MEASURES: SPECIAL DOCUMENT PAPER, INK SCREENS, WATERMARK, BACKGROUND DESIGNS, HOLOGRAM AND OTHER SECURITY FEATURES NOT LISTED AND DO EXCEED DOCUMENT SECURITY INDUSTRY GUIDELINES

February 10, 2026	GI CORNERD REC1, MODIFIED BRILLIANT
GI REPORT NO LG581513597	
10.18 X 7.08 X 4.77 MM	
Carat Weight	3.05 CABATS
Color Grade	G
Clarity Grade	VVS 1
Depth	67.4%
Table	65%
Girdle	Medium
Culet	Pointed
Patch	EXCELLENT
Symmetry	EXCELLENT
Fluor.essence	NONE
Inscriptions(s)	681 LG581513597

Comments: Very Green Diamond was treated by Chemical Vapor Deposition (CVD) growth process.

Type IIA

Comments:
This Laboratory Grown Diamond was created by Chemical Vapor Deposition (CVD) growth process.

www.igi.org