



**INTERNATIONAL  
GEMOLOGICAL  
INSTITUTE**

**ELECTRONIC COPY**

LG681531064  
Report verification at [igi.org](https://igi.org)

LABORATORY GROWN DIAMOND REPORT



February 6, 2025

IGI Report Number **LG681531064**

Description	LABORATORY GROWN DIAMOND
-------------	--------------------------

Shape and Cutting Style **ROUND BRILLIANT**

Measurements 9.23 - 9.27 X 5.62 MM

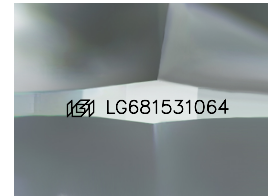
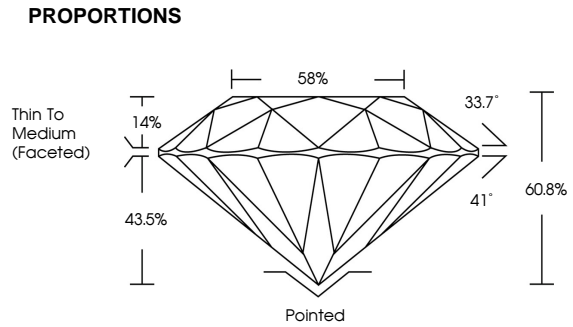
## GRADING RESULTS

Carat Weight **2.91 CARATS**

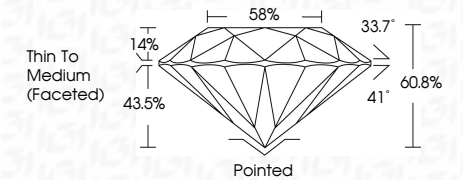
Color Grade	E
-------------	---

Clarity Grade VS 2

Cut Grade **IDEAL**



Sample Image Used



## COLOR

D E F G H I J Faint Very Light Light

## CLARITY

IF                      WS<sup>1-2</sup>                      VS<sup>1-2</sup>                      SI<sup>1-2</sup>                      I<sup>1-3</sup>

Internally Flawless	Very Very Slightly Included	Very Slightly Included	Slightly Included	Included
------------------------	--------------------------------	---------------------------	----------------------	----------



© IGI 2020, International Gemological Institute

FD - 10 20

**www.igi.org**



THIS DOCUMENT WAS PRODUCED WITH THE FOLLOWING SECURITY MEASURES: SPECIAL DOCUMENT PAPER, INK SCREENS, WATERMARK, BACKGROUND DESIGNS, HOLOGRAM, AND OTHER SECURITY FEATURES NOT LISTED AND DO EXCEED DOCUMENT SECURITY INDUSTRY GUIDELINES



IGI

February 6, 2025  
IGI Report No LG681531064  
ROUND BRILLIANT

9.23 - 9.27 X 5.62 MM  
Carat Weight 2.91 CARATS

9.23 - 9.27 X 0.02 MM	2.91 CARATS
Carat Weight	
Color Grade	E

Clarity Grade	VS 2	IDEAL
Cut Grade		

Cut Grade	IDEAL
Depth	60.8%
Table	58%

more	55%
Girdle	Thin To Medium (Faceted)

	Culet	Pointed	Excellent
Polish			

Polish	EXCELLENT
Symmetry	EXCELLENT
Fluorescence	NONE

Inscription(s)	Inventory Number
	1591 LG681531064

**Comments:**  
This Laboratory Grown Diamond was created by Chemical Vapor Deposition

(CVD) growth process,  
Type IIa