



**ELECTRONIC COPY**

## LABORATORY GROWN DIAMOND REPORT

February 18, 2025	
IGI Report Number	LG683533523
Description	LABORATORY GROWN DIAMOND
Shape and Cutting Style	CUSHION BRILLIANT
Measurements	7.49 X 5.37 X 3.62 MM

## GRADING RESULTS

Carat Weight	1.14 CARAT
Color Grade	F
Clarity Grade	VS 1

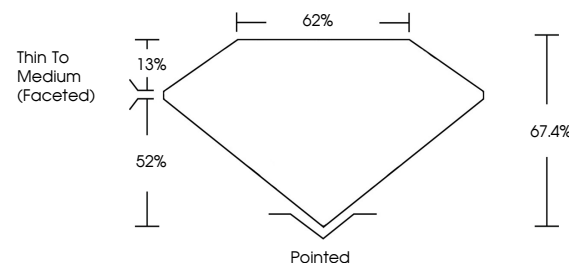
### ADDITIONAL GRADING INFORMATION

Polish	EXCELLENT
Symmetry	EXCELLENT
Fluorescence	NONE
Inscription(s)	151 LG683533523

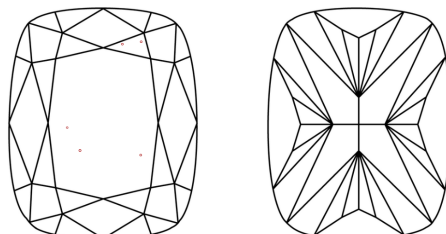
Comments: This Laboratory Grown Diamond was created by Chemical Vapor Deposition (CVD) growth process.  
Type IIa

LG683533523  
Report verification at [igi.org](https://igi.org)

## PROPORTIONS

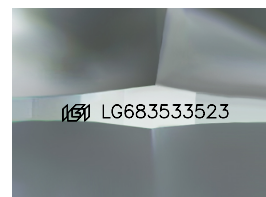


## CLARITY CHARACTERISTICS



### KEY TO SYMBOLS

Red symbols indicate internal characteristics.  
Green symbols indicate external characteristics.



Sample Image Used

## COLOR

D E F G H I J Faint Very Light Light

## CLARITY

IF	VS <sup>1-2</sup>	VS <sup>1-2</sup>	SI <sup>1-2</sup>	I <sup>1-3</sup>
Internally Flawless	Very Very Slightly Included	Very Slightly Included	Slightly Included	Included

## LABORATORY GROWN DIAMOND REPORT



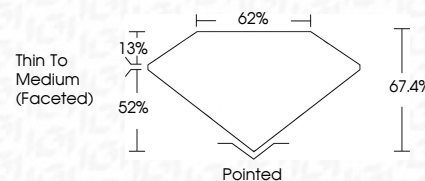
February 18, 2025	
IGI Report Number	LG683533523
Description	LABORATORY GROWN DIAMOND
Shape and Cutting Style	CUSHION BRILLIANT
Measurements	7.49 X 5.37 X 3.62 MM

## GRADING RESULTS

Carat Weight	1.14 CARAT
Color Grade	F
Clarity Grade	VS 1

### ADDITIONAL GRADING INFORMATION

Polish	EXCELLENT
Symmetry	EXCELLENT
Fluorescence	NONE
Inscription(s)	 LG683533523
Comments: This Laboratory Grown Diamond was created by Chemical Vapor Deposition (CVD) growth process.	
Type IIa	



© IGI 2020, International Gemological Institute

FD - 10 20



THIS DOCUMENT WAS PRODUCED WITH THE FOLLOWING SECURITY MEASURES: SPECIAL DOCUMENT PAPER, INK SCREENS, WATERMARK, BACKGROUND DESIGNS, HOLOGRAM AND OTHER SECURITY FEATURES NOT LISTED AND DO EXCEED DOCUMENT SECURITY INDUSTRY GUIDELINES

**www.igi.org**

February 18, 2025	1.14 CARAT
IGI Report No. LG4893538203	F
CUSHION BRILLIANT	VS 1
	67.4%
	62%
	Thin To Medium
	(Faceted)
	Pointed
	EXCELLENT
	EXCELLENT
	NONE
	ISSN LG4893538203

Comments: This is a very heavy diamond was created by Chemical Vapor Deposition (CVD) growth process.

Type IIa