

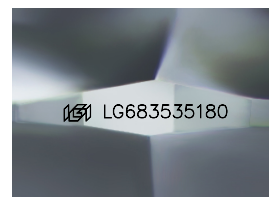
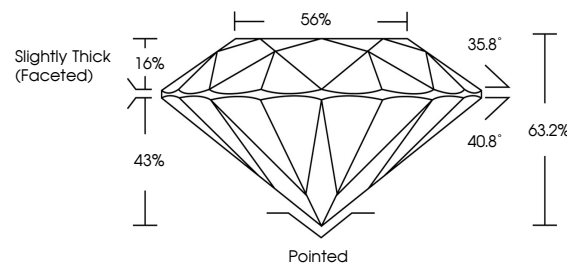


**ELECTRONIC COPY**

## LABORATORY GROWN DIAMOND REPORT

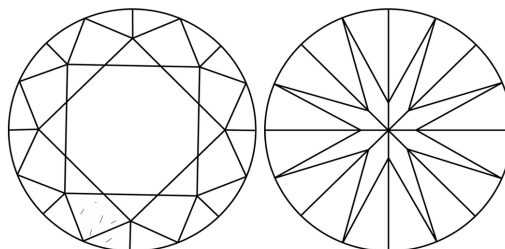
LG683535180  
Report verification at [igi.org](https://igi.org)

## PROPORTIONS



Sample Image Used

## CLARITY CHARACTERISTICS



### KEY TO SYMBOLS

Red symbols indicate internal characteristics.  
Green symbols indicate external characteristics.

## COLOR

D E F G H I J Faint Very Light Light

## CLARITY

IF WS<sup>1-2</sup> VS<sup>1-2</sup> SI<sup>1-2</sup> |<sup>1-3</sup>

Internally Flawless	Very Very Slightly Included	Very Slightly Included	Slightly Included	Included
------------------------	--------------------------------	---------------------------	----------------------	----------

## LABORATORY GROWN DIAMOND REPORT



February 18, 2025

IGI Report Number **LG683535180**Description **LABORATORY GROWN DIAMOND**Shape and Cutting Style **ROUND BRILLIANT**

Measurements 6.68 - 6.72 X 4.24 MM

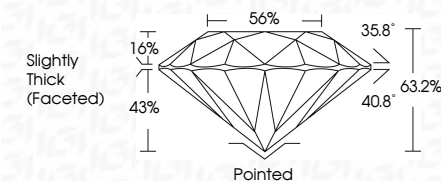
## GRADING RESULTS

Carat Weight 1.19 CARAT

Color Grade E

Clarity Grade **VVS 2**

Cut Grade **EXCELLENT**



### ADDITIONAL GRADING INFORMATION

Polish **EXCELLENT**Symmetry **EXCELLENT**Fluorescence **NONE**Inscription(s)  LG683535180

Comments: As Grown - No indication of post-growth treatment.

This Laboratory Grown Diamond was created by High Pressure High Temperature (HPHT) growth process.  
Type II



IG



© IGI 2020, International Gemological Institute

FD - 10 20



THIS DOCUMENT WAS PRODUCED WITH THE FOLLOWING SECURITY MEASURES: SPECIAL DOCUMENT PAPER, INK SCREENS, WATERMARK, BACKGROUND DESIGNS, HOLOGRAM, AND OTHER SECURITY FEATURES NOT LISTED AND DO EXCEED DOCUMENT SECURITY INDUSTRY GUIDELINES

**www.igi.org**

	6.68 - 4.72 X 4.24 MM	
	Carat Weight	1.19 CARAT
	Color Grade	E
	Clarity Grade	VVS 2
	Cut Grade	EXCELLENT
	Depth	63.2%
	Table	65%
	Girdle	Slightly Thick (Faceted)
	Culet	Pinkish
	Pavil	EXCELLENT
	Symmetry	EXCELLENT
	Fluorescence	NONE
	Inclusions(s)	#GG LG483538180
<b>Comments:</b>		
As Grown - No indication of post-growth treatment.		
This Laboratory Growth Diamond was created by High Pressure High Temperature (HPHT) growth process.		
Type II		