

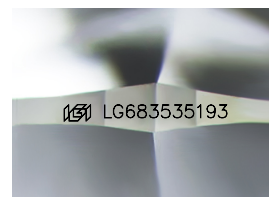
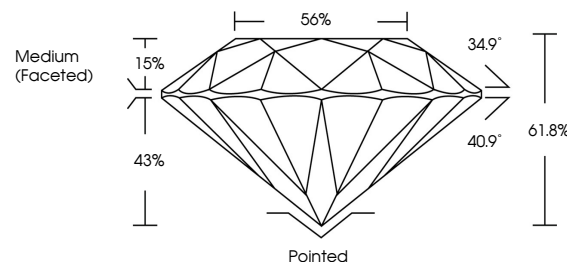


**ELECTRONIC COPY**

## LABORATORY GROWN DIAMOND REPORT

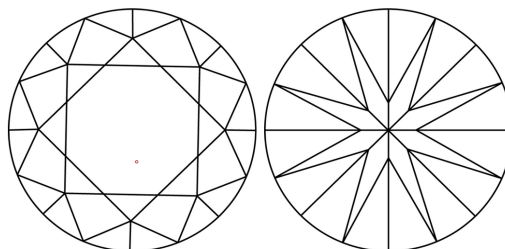
LG683535193  
Report verification at [lgi.org](https://lgi.org)

## PROPORTIONS



Sample Image Used

## CLARITY CHARACTERISTICS



### KEY TO SYMBOLS

Red symbols indicate internal characteristics.  
Green symbols indicate external characteristics.

## COLOR

D E F G H I J Faint Very Light Light

## CLARITY

IF WS<sup>1-2</sup> VS<sup>1-2</sup> SI<sup>1-2</sup> |<sup>1-3</sup>

Internally Flawless	Very Very Slightly Included	Very Slightly Included	Slightly Included	Included
------------------------	--------------------------------	---------------------------	----------------------	----------



© IGI 2020, International Gemological Institute

FD - 10 20

**www.igi.org**

## LABORATORY GROWN DIAMOND REPORT



February 20, 2025

IGI Report Number **LG683535193**Description **LABORATORY GROWN DIAMOND**Shape and Cutting Style **ROUND BRILLIANT**

Measurements 7.00 - 7.04 X 4.34 MM

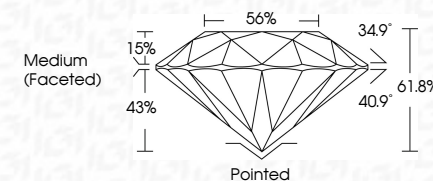
## GRADING RESULTS

Carat Weight 1.31 CARAT

Color Grade D

Clarity Grade VS 1

Cut Grade **IDEAL**



### ADDITIONAL GRADING INFORMATION

Polish **EXCELLENT**Symmetry **EXCELLENT**Fluorescence **NONE**Inscription(s)  LG683535193

Comments: As Grown - No indication of post-growth treatment.

This Laboratory Grown Diamond was created by High Pressure High Temperature (HPHT) growth process.

Type II



IG

February 20, 2025	1.31 CARAT
IGI Report No. LG45935193	D
ROUND BRILLIANT	Vs 1
0.00 - 7.04 X 4.34 MM	IDEAL
	61.8%
	56%
	Medium (Faceted)
Carat Weight	Pointed
Color Grade	EXCELLENT
Clarity Grade	EXCELLENT
Cut Grade	NONE
Depth	891 LG45935193
Table	
Girdle	
Culet	
Polish	
Symmetry	
Fluorescence	
Inclusions(s)	
Comments:	
As Grown - No indication of post-growth treatment.	
The Laboratory Grown Diamond was created by High Pressure High Temperature (HPHT) growth process.	