

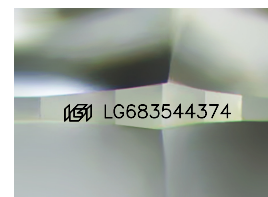
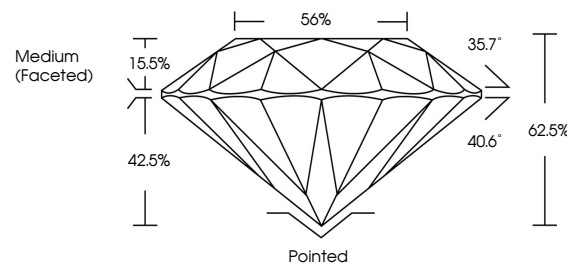


**ELECTRONIC COPY**

## LABORATORY GROWN DIAMOND REPORT

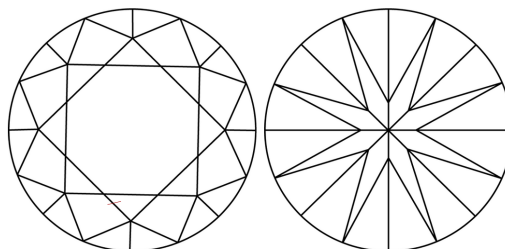
LG683544374  
Report verification at [lgi.org](https://lgi.org)

## PROPORTIONS



Sample Image Used

## CLARITY CHARACTERISTICS



## KEY TO SYMBOLS

Red symbols indicate internal characteristics.  
Green symbols indicate external characteristics.

## COLOR

D E F G H I J Faint Very Light Light

## CLARITY

IF      WS<sup>1-2</sup>      VS<sup>1-2</sup>      S<sup>1-2</sup>      |<sup>1-3</sup>

Internally Flawless	Very Very Slightly Included	Very Slightly Included	Slightly Included	Included
------------------------	--------------------------------	---------------------------	----------------------	----------



© IGI 2020, International Gemological Institute

FD - 10 20

**www.igi.org**

## LABORATORY GROWN DIAMOND REPORT



March 6, 2025

IGI Report Number **LG683544374**Description **LABORATORY GROWN DIAMOND**Shape and Cutting Style **ROUND BRILLIANT**

Measurements 6.74 - 6.81 X 4.23 MM

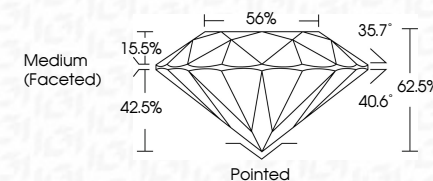
## GRADING RESULTS

Carat Weight **1.20 CARAT**

Color Grade E

Clarity Grade VS 1

Cut Grade **IDEAL**



### ADDITIONAL GRADING INFORMATION

Polish EXCELLENT

Symmetry **EXCELLENT**Fluorescence NONIInscription(s)  LG683544374

Comments: As Grown - No indication of post-growth treatment.

This Laboratory Grown Diamond was created by High Pressure High Temperature (HPHT) growth process.

Type II



	V8 1		Printed
	IDEAL		EXCELLENT
	62.9%		EXCELLENT
	50%		NONE
	(Medium (Faceted)		(#) LG56S044374

Comments:

- Grown - No indication of post-growth treatment.
- This Laboratory Grown Diamond was created by High Pressure High Temperature (HPHT) growth process.
- Type II

---