

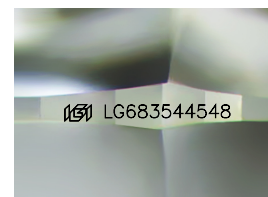
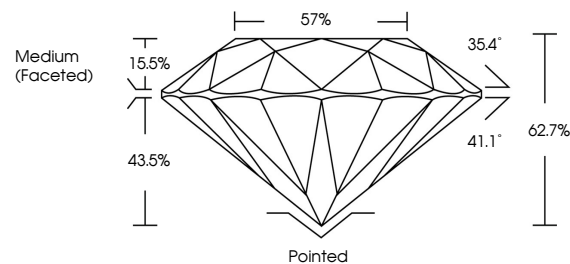


**ELECTRONIC COPY**

## LABORATORY GROWN DIAMOND REPORT

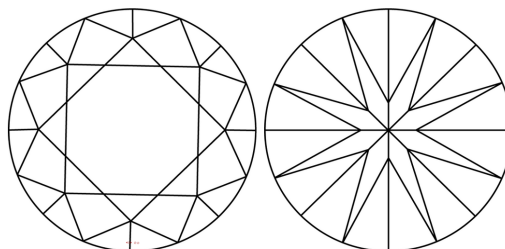
LG683544548  
Report verification at [igi.org](https://igi.org)

## PROPORTIONS



Sample Image Used

## CLARITY CHARACTERISTICS



### KEY TO SYMBOLS

Red symbols indicate internal characteristics.  
Green symbols indicate external characteristics.

## COLOR

D E F G H I J Faint Very Light Light

## CLARITY

IF                      VS<sup>1-2</sup>                      VS<sup>1-2</sup>                      SI<sup>1-2</sup>                      I<sup>1-3</sup>

|                        |                                |                           |                      |          |
|------------------------|--------------------------------|---------------------------|----------------------|----------|
| Internally<br>Flawless | Very Very<br>Slightly Included | Very<br>Slightly Included | Slightly<br>Included | Included |
|------------------------|--------------------------------|---------------------------|----------------------|----------|

## LABORATORY GROWN DIAMOND REPORT



March 6, 2025

IGI Report Number **LG683544548**Description **LABORATORY GROWN DIAMOND**Shape and Cutting Style **ROUND BRILLIANT**

Measurements 7.16 - 7.22 X 4.50 MM

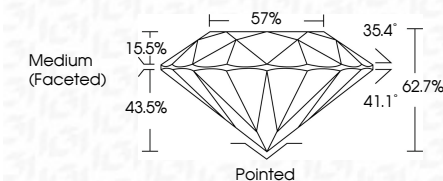
## GRADING RESULTS

Carat Weight **1.43 CARAT**

Color Grade D

Clarity Grade VS 1

Cut Grade **EXCELLENT**



### ADDITIONAL GRADING INFORMATION

Polish EXCELLENT

Symmetry **EXCELLENT**Fluorescence **NONE**Inscription(s)  LG683544548

Comments: As Grown - No indication of post-growth treatment.

This Laboratory Grown Diamond was created by High Pressure High Temperature (HPHT) growth process.



© IGI 2020, International Gemological Institute

FD - 10 20



THIS DOCUMENT WAS PRODUCED WITH THE FOLLOWING SECURITY MEASURES: SPECIAL DOCUMENT PAPER, INK SCREENS, WATERMARK, BACKGROUND DESIGNS, HOLOGRAM, AND OTHER SECURITY FEATURES NOT LISTED AND DO EXCEED DOCUMENT SECURITY INDUSTRY GUIDELINES.

**www.igi.org**

|   |                         |
|---|-------------------------|
| <b>Gem Report No</b>  | <b>L689354A548</b>      |
| <b>ROUND BRILLIANT</b>  |                         |
| <b>Weight - 7.16 ~ 7.22 X 4.50 MM</b>   |                         |
| <b>Color Weight</b>   | <b>1.43 CARAT</b>       |
| <b>Color Grade</b>  | <b>D</b>                |
| <b>Clarity Grade</b>  | <b>VS 1</b>             |
| <b>Cut Grade</b>  | <b>EXCELLENT</b>        |
| <b>Depth %</b>  | <b>62.7%</b>            |
| <b>Table %</b>  | <b>57%</b>              |
| <b>Grille</b>   | <b>Medium (Faceted)</b> |
| <b>Quarf</b>  | <b>Patched</b>          |
| <b>Polish</b>   | <b>EXCELLENT</b>        |
| <b>Symmetry</b>   | <b>EXCELLENT</b>        |
| <b>Fluorescence</b>   | <b>NONE</b>             |
| <b>Identification #</b>   | <b>#GJL568304648</b>    |
| <b>Comments:</b>  |                         |
| <b>As Grown - No indication of post-growth treatment.</b>   |                         |
| <b>This Laboratory Grown Diamond was created by High Pressure High Temperature (HPHT) growth process.</b> |                         |
| <b>Type IIa</b>   |                         |