

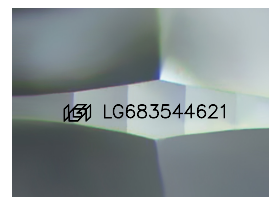
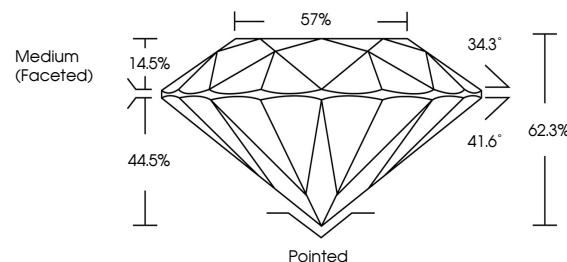


**ELECTRONIC COPY**

## LABORATORY GROWN DIAMOND REPORT

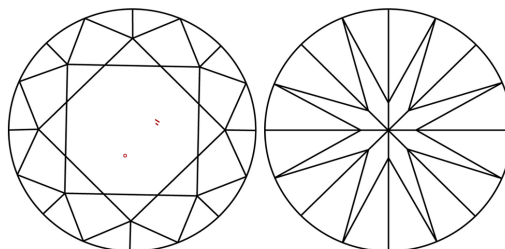
LG683544621  
Report verification at [lgi.org](https://lgi.org)

## PROPORTIONS



Sample Image Used

## CLARITY CHARACTERISTICS



## KEY TO SYMBOLS

Red symbols indicate internal characteristics.  
Green symbols indicate external characteristics.

## COLOR

D E F G H I J Faint Very Light Light

## CLARITY

IF WS<sup>1-2</sup> VS<sup>1-2</sup> SI<sup>1-2</sup> |<sup>1-3</sup>

Internally Flawless	Very Very Slightly Included	Very Slightly Included	Slightly Included	Included
------------------------	--------------------------------	---------------------------	----------------------	----------



© IGI 2020, International Gemological Institute

FD - 10 20

**www.igi.org**

## LABORATORY GROWN DIAMOND REPORT



March 5, 2025

IGI Report Number **LG683544621**Description **LABORATORY GROWN DIAMOND**Shape and Cutting Style **ROUND BRILLIANT**

Measurements 7.18 - 7.21 X 4.48 MM

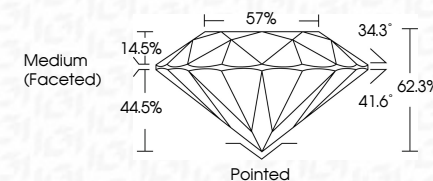
## GRADING RESULTS

Carat Weight 1.41 CARAT

Color Grade D

Clarity Grade VS 1

Cut Grade **EXCELLENT**



### ADDITIONAL GRADING INFORMATION

Polish **EXCELLENT**Symmetry **EXCELLENT**Fluorescence **NONE**Inscription(s)  LG683544621

Comments: As Grown - No indication of post-growth treatment.

This Laboratory Grown Diamond was created by High Pressure High Temperature (HPHT) growth process.

Type II



IG

March 5, 2025	1.41 CARAT	Polished	Comments: As grown - No indication of post-growth treatment. This Laboratory Grown Diamond was created by High Pressure High Temperature (HPHT) growth process.
GI Report No US693544221	D	EXCELLENT	
ROUND BRILLIANT	VS 1	EXCELLENT	
	62.2%	57%	
	Medium (Faceted)		
17.18 - 7.21 x 4.48 MM			
Carat Weight	Carat Grade	Clarity Grade	Fluorescence Inscriptions(s)
Color Grade	Cut Grade	Depth	
		Table	
		Girdle	
		Culet	
		Polish	
		Symmetry	