



ELECTRONIC COPY

LABORATORY GROWN DIAMOND REPORT

March 7, 2025	
IGI Report Number	LG683544662
Description	LABORATORY GROWN DIAMOND
Shape and Cutting Style	ROUND BRILLIANT
Measurements	7.15 - 7.20 X 4.45 MM

GRADING RESULTS

Carat Weight	1.41 CARAT
Color Grade	E
Clarity Grade	VS 1
Cut Grade	IDEAL

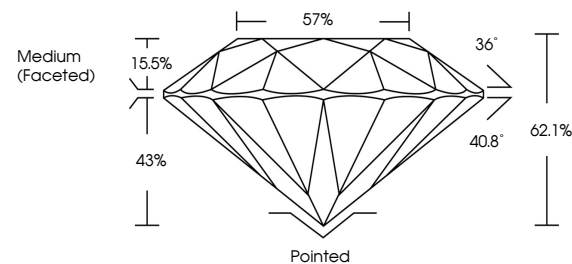
ADDITIONAL GRADING INFORMATION

Polish	EXCELLENT
Symmetry	EXCELLENT
Fluorescence	NONE
Inscription(s)	 LG683544662

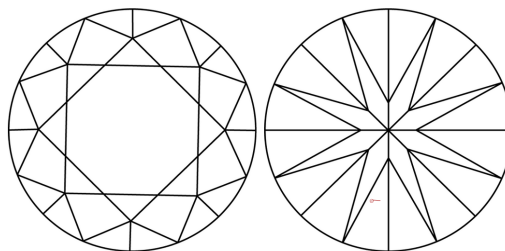
Comments: As Grown - No indication of post-growth treatment.
This Laboratory Grown Diamond was created by High Pressure High Temperature (HPHT) growth process.
Type II

LG683544662
Report verification at igi.org

PROPORTIONS

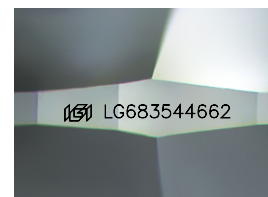


CLARITY CHARACTERISTICS



KEY TO SYMBOLS

Red symbols indicate internal characteristics.
Green symbols indicate external characteristics.



Sample Image Used

COLOR

D E F G H I J Faint Very Light Light

CLARITY

IF VWS¹⁻² VS¹⁻² SI¹⁻² I¹⁻³

Internally Flawless	Very Very Slightly Included	Very Slightly Included	Slightly Included	Included
------------------------	--------------------------------	---------------------------	----------------------	----------

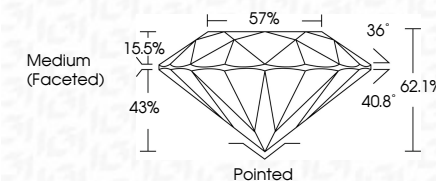
LABORATORY GROWN DIAMOND REPORT



March 7, 2025	
IGI Report Number	LG683544662
Description	LABORATORY GROWN DIAMOND
Shape and Cutting Style	ROUND BRILLIANT
Measurements	7.15 - 7.20 X 4.45 MM

GRADING RESULTS

Carat Weight	1.41 CARAT
Color Grade	E
Clarity Grade	VS 1
Cut Grade	IDEAL



ADDITIONAL GRADING INFORMATION

Polish	EXCELLENT
Symmetry	EXCELLENT
Fluorescence	NONE
Inscription(s)	(G) LG683544662
Comments: As Grown - No indication of post-growth treatment.	
This Laboratory Grown Diamond was created by High Pressure High Temperature (HPHT) growth process.	
Type II	



IG



© IGI 2020, International Gemological Institute

FD - 10 20



THIS DOCUMENT WAS PRODUCED WITH THE FOLLOWING SECURITY MEASURES: SPECIAL DOCUMENT PAPER, INK SCREENS, WATERMARK, BACKGROUND DESIGNS, HOLOGRAM AND OTHER SECURITY FEATURES NOT LISTED AND DO EXCEED DOCUMENT SECURITY INDUSTRY GUIDELINES

www.igi.org

March 7, 2005	Report No. G29854662	
ROUND BRILLIANT		
7.16 - 7.20 X 4.45 MM	Carat Weight	1.41 CARAT
	Color Grade	E
	Clarity Grade	VS 1
	Cut Grade	IDEAL
	Depth	62.1%
	Table	57%
	Girdle	Medium (Faceted)
	Culet	Pointed
	Polish	EXCELLENT
	Symmetry	EXCELLENT
	Fluorescence	NONE
	Inscriptions(s)	lgf1568564662
Comments:		
As Grown - No indication of post-growth treatment.		
Grown Under High Pressure and High Temperature (HPHT) growth process.		
Type II		