

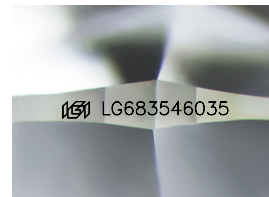
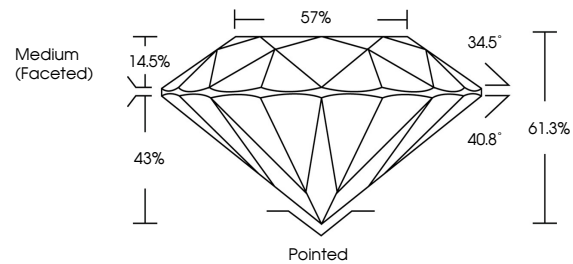


**INTERNATIONAL
GEMOLOGICAL
INSTITUTE**

ELECTRONIC COPY

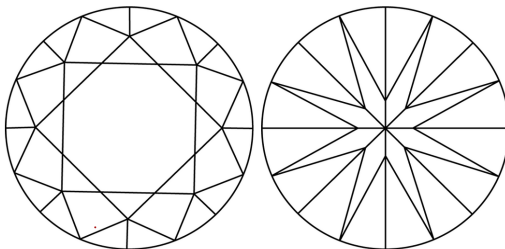
LG683546035
Report verification at igi.org

PROPORTIONS



Sample Image Used

CLARITY CHARACTERISTICS



KEY TO SYMBOLS

Red symbols indicate internal characteristics.
Green symbols indicate external characteristics.

COLOR

D E F G H I J Faint Very Light Light

CLARITY

IF WS¹⁻² VS¹⁻² SI¹⁻² I¹⁻³

| | | | | |
|------------------------|--------------------------------|---------------------------|----------------------|----------|
| Internally Flawless | Very Very Slightly Included | Very Slightly Included | Slightly Included | Included |
|------------------------|--------------------------------|---------------------------|----------------------|----------|



March 4, 2025

IGI Report Number **LG683546035**

| | |
|-------------|--------------------------|
| Description | LABORATORY GROWN DIAMOND |
|-------------|--------------------------|

Shape and Cutting Style **ROUND BRILLIANT**

| | |
|--------------|-----------------------|
| Measurements | 7.87 - 7.91 X 4.84 MM |
|--------------|-----------------------|

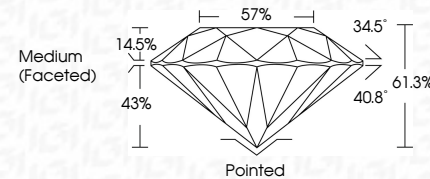
GRADING RESULTS

Carat Weight **1.85 CARAT**

Color Grade **D**

Clarity Grade VVS 2

Cut Grade **IDEAL**



ADDITIONAL GRADING INFORMATION

Polish **EXCELLENT**Symmetry **EXCELLENT**Fluorescence **NONE**Inscription(s)  LG68354603

Comments: As Grown - No indication of post-growth treatment.

This Laboratory Grown Diamond was created by High Pressure High Temperature (HPHT) growth process.

Type II



IG



© IGI 2020, International Gemological Institute

FD - 10 20

www.igi.org

THIS DOCUMENT WAS PRODUCED WITH THE FOLLOWING SECURITY MEASURES: SPECIAL DOCUMENT PAPER, INK SCREENS, WATERMARK, BACKGROUND DESIGNS, HOLOGRAM AND OTHER SECURITY FEATURES NOT LISTED AND DO EXCEED DOCUMENT SECURITY INDUSTRY GUIDELINES

| | | | | |
|-----------------|---------------------------|--|------------------|-------|
| March 4, 2025 | IGI Report No LG493540395 | | | |
| ROUND BRILLIANT | 7.87 - 7.91 X 4.84 MM | 1.86 CARAT | D | |
| Color Grade | Clarity Grade | VVS 2 | IDEAL | 61.3% |
| Cut Grade | Depth | 57% | Medium (Faceted) | |
| Symmetry | Fluorescence | Polished | EXCELLENT | |
| Inscriptions(s) | | EXCELLENT | NONE | |
| | | lgf LG493540395 | | |
| Comments: | | As Grown - No indication of post-growth treatment. This laboratory Grown Diamond was synthesized by a High Pressure High Temperature (HPHT) growth process. | | |
| Type IIa | | | | |