

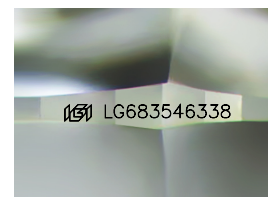
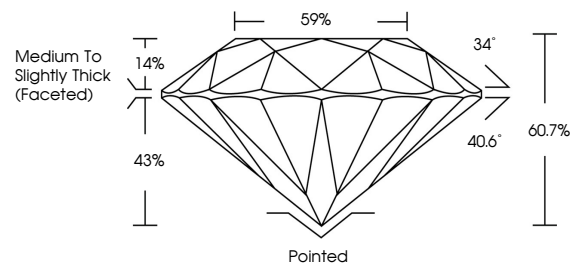


ELECTRONIC COPY

LABORATORY GROWN DIAMOND REPORT

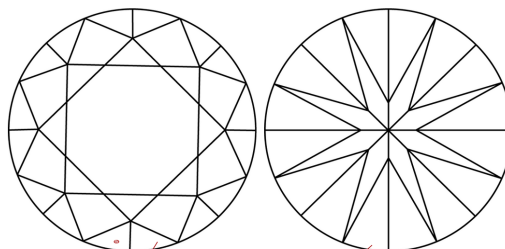
LG683546338
Report verification at [igi.org](https://www.igi.org)

PROPORTIONS



Sample Image Used

CLARITY CHARACTERISTICS



KEY TO SYMBOLS

Red symbols indicate internal characteristics.
Green symbols indicate external characteristics.

COLOR

D E F G H I J Faint Very Light Light

CLARITY

IF WS¹⁻² VS¹⁻² SI¹⁻² |¹⁻³

Internally Flawless	Very Very Slightly Included	Very Slightly Included	Slightly Included	Included
------------------------	--------------------------------	---------------------------	----------------------	----------

LABORATORY GROWN DIAMOND REPORT



February 27, 2025

IGI Report Number **LG683546338**Description **LABORATORY GROWN DIAMOND**Shape and Cutting Style **ROUND BRILLIANT**

Measurements 6.89 - 6.94 X 4.20 MM

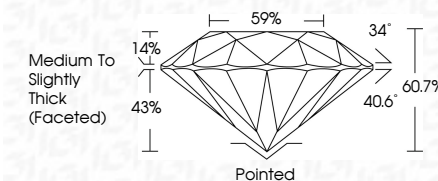
GRADING RESULTS

Carat Weight **1.24 CARAT**

Color Grade E

Clarity Grade VS 1

Cut Grade **IDEAL**



ADDITIONAL GRADING INFORMATION

Polish **EXCELLENT**Symmetry **EXCELLENT**Fluorescence **NONE**Inscription(s)  LG683546338

Comments: As Grown - No indication of post-growth treatment.

This Laboratory Grown Diamond was created by High Pressure High Temperature (HPHT) growth process.

Type II



© IGI 2020, International Gemological Institute

FD - 10 20



THIS DOCUMENT WAS PRODUCED WITH THE FOLLOWING SECURITY MEASURES: SPECIAL DOCUMENT PAPER, INK SCREENS, WATERMARK, BACKGROUND DESIGNS, HOLOGRAM AND OTHER SECURITY FEATURES NOT LISTED AND DO EXCEED DOCUMENT SECURITY INDUSTRY GUIDELINES

www.igi.org

February 27, 2025	G Report No. LG683543338	
ROUND BRILLIANT	1.24 CARAT	
Wt. 6.69 - 6.94 X 4.20 MM	Color Grade	E
Clarity Grade	VS 1	IDEAL
Cut Grade	60.1%	69%
Depth	Medium to Slightly Thick (Faceted)	
Table	Ported	
Girdle	EXCELLENT	
Fluorescence	EXCELLENT	
Symmetry	NONE	
Inclusions	#69 LG683543338	
<p>Comments:</p> <p>None - No indication of post-growth treatment.</p> <p>This Laboratory Growth Diamond was created by High Pressure High Temperature (HPHT) growth process.</p>		