

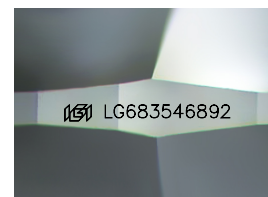
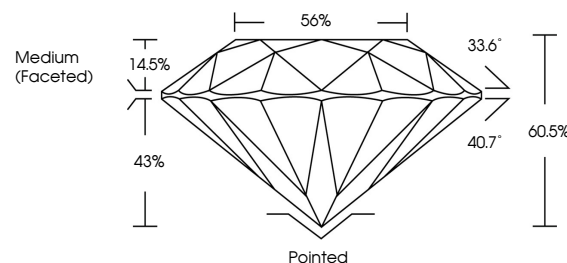


ELECTRONIC COPY

LABORATORY GROWN DIAMOND REPORT

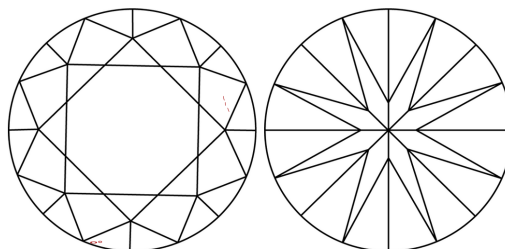
LG683546892
Report verification at igi.org

PROPORTIONS



Sample Image Used

CLARITY CHARACTERISTICS



KEY TO SYMBOLS

Red symbols indicate internal characteristics.
Green symbols indicate external characteristics.

COLOR

D E F G H I J Faint Very Light Light

CLARITY

IF WS¹⁻² VS¹⁻² S¹⁻² |¹⁻³

Internally Flawless	Very Very Slightly Included	Very Slightly Included	Slightly Included	Included
------------------------	--------------------------------	---------------------------	----------------------	----------



© IGI 2020, International Gemological Institute

FD - 10 20

www.igi.org

LABORATORY GROWN DIAMOND REPORT



March 4, 2025

IGI Report Number **LG683546892**Description **LABORATORY GROWN DIAMOND**Shape and Cutting Style **ROUND BRILLIANT**

Measurements 6.85 - 6.91 X 4.17 MM

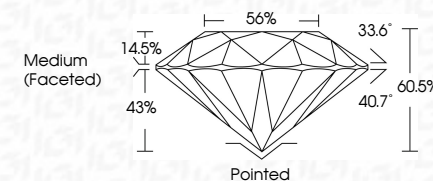
GRADING RESULTS

Carat Weight 1.20 CARAT

Color Grade

Clarity Grade VS 1

Cut Grade **IDEAL**



ADDITIONAL GRADING INFORMATION

Polish **EXCELLENT**Symmetry **EXCELLENT**Fluorescence **NONE**Inscription(s)  LG683546892

Comments: As Grown - No indication of post-growth treatment.

This Laboratory Grown Diamond was created by High Pressure High Temperature (HPHT) growth process.

Type II



March 4, 2025	GI Report No LG4364692	ROUND BRILLIANT	1.20 CARAT	E	VS 1	Painted	Comments: As Grown - No indication of post-growth treatment. This Laboratory Grown Diamond was created by High Pressure High Temperature (HPHT) growth process. Type IIa
	68 - 4.91 X 4.17 MM	Color Grade			IDEAL	EXCELLENT	
		Carat Weight			60.0%	NONE	
		Clarity Grade			50%	(8) LG4364692	
		Cut Grade			Medium (Faceted)		
		Depth				Excellent	
		Table				Symmetry	
		Girdle				Fluorescence	
						Inscriptions(s)	
		Culet					
		Patch					